

plumbers choice

TRADE
ONLY



ONE CLIP TO RULE THEM ALL

489 Mountain Highway, Bayswater, VIC 3153

Email: info@plumberschoice.com.au • Ph: (03) 9720 8274

www.plumberschoice.com.au



Luke's Editorial



The ultimate PEX Clip has finally arrived!

But don't take my word for it. Over the next couple of months we will be sending out free samples with every order.

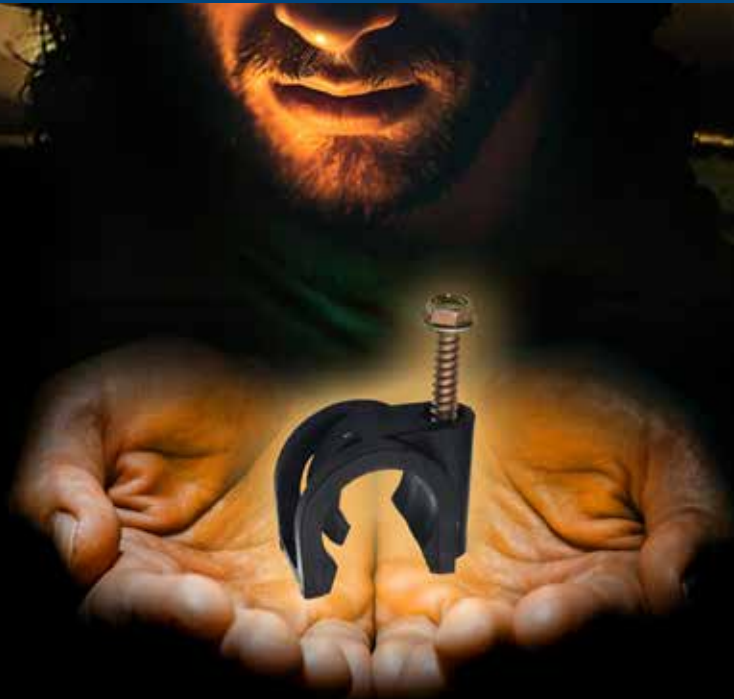
Keep an eye out for them and give them a try.

This clip has a superior fastening for both timber and steel. No more hammering, no more dealing with phillips head screws that slip off the driver. It's also a DualPex so it will fit both 16mm and 20mm PEX pipe.

I genuinely believe it is one clip to rule them all.

LUKE BOLTON
DIRECTOR, PLUMBERS CHOICE

**plumbers
choice** TRADE ONLY



ONE CLIP TO RULE THEM ALL

HOW TO ORDER



Online - 24 hours
www.plumberschoice.com.au



Email - 24 hours
sales@plumberschoice.com.au



Phone - Business Hours
(03) 9720 8274
Our knowledgeable staff will take your order.



At our Trade Outlets
Monday - Friday
489 Mountain Highway, Bayswater, VIC 3153
4/200 Woodpark Road, Smithfield, NSW 2164



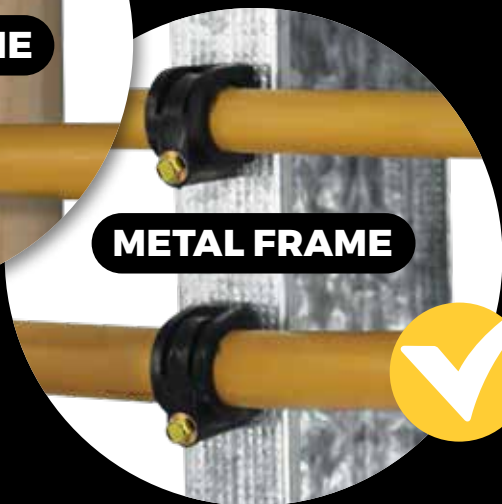
Personal Sales Rep
Your personal Sales Representative is able to tailor our service to suit your needs.



Shop
Trade Only
from the
palm of your
hand!

ONE CLIP TO RULE THEM ALL

SUITS BOTH TIMBER & STEEL



DUALPEX HEX HEAD DUO SCREW

Same clip for timber & steel

- One clip fits 2 sizes - fits 16mm and 20mm Pex pipe
- Plastic tongue on clip moves outward to fit different size pipes

Bag Qty 100
16 - 20mm
Code: 5577



Bag Qty 100
16 - 20mm
Code: 5578



FREE

**DRIVER
BIT**



Every bag comes with a **FREE**
1/4 INCH MAGNETIC NUT SETTER

TAPWARE

CHROME
PLATED
FINISH



WALL SINK SET

Code: 3703 **\$100.67** (INC. GST)



HOB SINK SET

Code: 3706 **\$110.96** (INC. GST)



BASIN SET

Code: 3700 **\$94.31** (INC. GST)
Code: 3699 Ceramic Disc **\$143.59** (INC. GST)



BATH SET

Code: 3701 **\$59.21** (INC. GST)



BASIN TOP ASSEMBLIES

Code: 3707 **\$41.71** (INC. GST)
Code: 3712 Ceramic Disc **\$78.65** (INC. GST)



WALL TOP ASSEMBLIES

Code: 3704 **\$41.71** (INC. GST)
Code: 3710 Ceramic Disc **\$78.65** (INC. GST)



SWIVEL SPOUT WALL TUBE C/P 180mm

Code: 7095 **\$29.55** (INC. GST)



SWIVEL SPOUT HOB TUBE C/P 180mm

Code: 7096 **\$21.98** (INC. GST)



LAUNDRY ARM SWIVEL C/P 150mm

Code: 3711 **\$12.86** (INC. GST)



NEW



**HAND SHOWER
W/ BRACKET &
5 FUNCTION HEAD**

Code: 3713 **\$65.46** (INC. GST)

SHOWER SET

Code: 3702 **\$65.14** (INC. GST)



**SHOWER ROSE UNIVERSAL
ALL DIRECTIONAL**

Code: SHO2 **\$22.41** (INC. GST)

Code: SHO2SW Loose Nut **\$25.63** (INC. GST)



**BOOSTER HANDLES
& BUTTONS**

Code: HD09 **\$6.33** (INC. GST)



**TOP ASSEMBLIES
RECESSED 15mm**

Code: 7500 **\$17.52** (INC. GST)



**WASHING MACHINE
CONVERSION UNIT UNIVERSAL**

Code: WMC **\$147.25** (INC. GST)



WASHING MACHINE SET

Code: 3705 **\$50.59** (INC. GST)



**WALL TOP ASSEMBLY
LEVER HANDLE
EZ CLEAN ANTI-VANDAL**

Code: 3714 **\$112.27** (INC. GST)



**BASIN TOP ASSEMBLY
LEVER HANDLE
EZ CLEAN ANTI-VANDAL**

Code: 3720 **\$112.27** (INC. GST)



**BASIN SET
LEVER HANDLE
EZ CLEAN ANTI-VANDAL**

Code: 3737 **\$176.22** (INC. GST)



**PILLAR TOP ASSEMBLY
EZ CLEAN ANTI-VANDAL**

Code: 3730 **\$52.21** (INC. GST)



BRASSHARDS

EST. 1967



PLUMBING SUPPLIES SPECIALIST



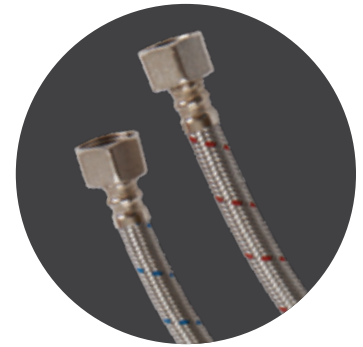
SecuraNut fixing

*Locks on
and won't
loosen*

40% MORE GRIP!



Metal Bolt Fixing



Polymide Pex Tails

EXCLUSIVE TO PLUMBERS CHOICE



Metal bolt fixing
kit featuring
**NEW
SecuraNut**

▲ BASIN MIXER SWIVEL

- Wels 4* 7.5 LPM
- Rated to 1500kPa
- Metal bolt fixing kit featuring new SecuraNut
- 40mm cartridge
- Supplied with polyamide pex tails
- 25 year warranty on all parts
- 5 year warranty on labour

120mm | CODE: 2835



Metal bolt fixing
kit featuring
**NEW
SecuraNut**

▲ SINK MIXER SWIVEL

- Wels 4* 7.5 LPM
- Rated to 1500kPa
- Metal bolt fixing kit featuring new SecuraNut
- 40mm cartridge
- Supplied with polyamide pex tails
- 25 year warranty on all parts
- 5 year warranty on labour

225mm | CODE: 2830



Metal bolt fixing
kit featuring
**NEW
SecuraNut**

▲ BASIN MIXER FIXED

- Wels 4* 7.5 LPM
- Rated to 1500kPa
- Metal bolt fixing kit featuring new SecuraNut
- 40mm cartridge
- Supplied with polyamide pex tails
- 25 year warranty on all parts
- 5 year warranty on labour

120mm | CODE: 2866

SPECIAL

STOP TAPS

\$5⁵⁰

INC GST



**LOOSE NUT
EXTENSION
15 x 50mm C/P**

CODE: 6582

\$5⁵⁰

INC GST



**STOP TAP
LOOSE
NUT**

CODE: 6587

\$9⁹⁰

INC GST



**STOP TAP LOOSE
NUT WASHING
MACHINE**

CODE: 6590



\$19²⁵

INC GST

**STOP TAP LOOSE NUT
TRI VALVE 15mm**

• Ideal for use with water filters & bidets

CODE: 6592



\$16⁵⁰

INC GST

**STOP TAP LOOSE NUT
TRI VALVE**

• Connect tap and dishwasher with single fitting

CODE: 6251



Valid until 31st August 2024

Same day delivery for Sydney and Melbourne Metro

weird & wonderful traps



Flexidinger Bath Brass/Chrome 40mm x 350mm

- For varying angles and gradients where space below taps & baths is limited
- Flexible tube is suitable for solvent welding

Code: 2730



Flexidinger Cap Lining Elbow

- For varying angles and gradients where space below taps & baths is limited
- Flexible tube is suitable for solvent welding

Code: 2733



Box Trap & Vanity Space Saver 40mm

- Minimal exterior dimensions maximises shelf space
- Can be positioned flat against the rear of the cabinet
- Fewer dust traps

Code: 2779



Vanity Space Saver 40mm

- The low profile keeps the space saver tucked up close to the top of the vanity unit maximising space and giving a more professional finish

Code: 2778



Trap Combo S & P with AAV 40mm

- Built-in air admittance valve
- Approved for installations up to 60°C
- 20mm overflow connection needs to be drilled out if required

Code: 2785



Trap Combo S & P with AAV 50mm

- Built-in air admittance valve
- Approved for installations up to 60°C
- 20mm overflow connection needs to be drilled out if required

Code: 2786



Trap Waterless Horizontal 40mm

- Loose Nut
- Ideal for disabled basins
- Screws onto any 40mm plug & waste

Code: 2787



Trap Waterless 40mm

- Prevents odours escaping
- Tested and approved WMKT20062

Code: 2788



Trap Micro 40mm

- Loose Nut
- Ideal for disabled basins
- Screws onto any 40mm plug & waste. Easily adapted to suit 32mm.

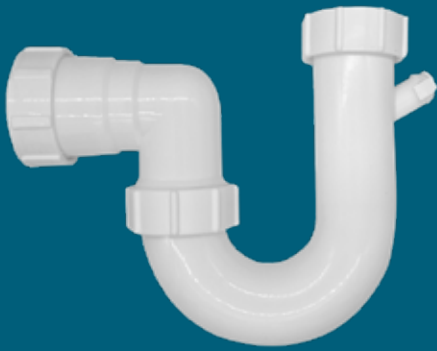
Code: 2792



Trap Waterless 50mm

- Prevents odours escaping
- Tested and approved WMKT20062

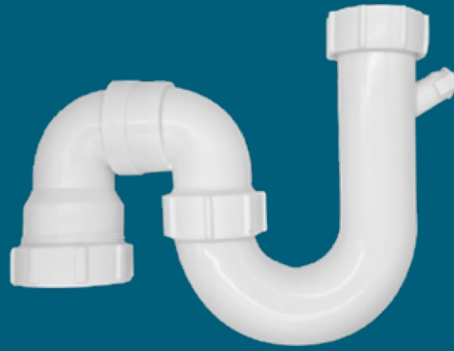
Code: 2789



Trap P

- All PVC complies with ASNZ1260
- Removable plugs in nipples

40mm Code: 2799
50mm Code: 2798



Trap Combo S & P

- All PVC complies with ASNZ1260
- Removable plugs in nipples

40mm Code: 2802
50mm Code: 2803



Trap P Short Leg

- All PVC complies with ASNZ1260

40mm Code: 2796
50mm Code: 2797

standard & common traps



Trap Extension Solvent Weld

- All PVC complies with ASNZ1260

40mm x 200mm Code: 2782
50mm x 200mm Code: 2783



Trap Adaptor

- All PVC complies with ASNZ1260
- Ideal for reducing a trap to suit a 32mm basin waste

32-40mm Code: 2795



Trap Extension Double Nipples (Overflows)

- All PVC complies with ASNZ1260

50mm x 60mm Code: 2784



Trap Extension

- All PVC complies with ASNZ1260

40mm x 25mm Code: 2780
50mm x 25mm Code: 2781

NEED TO CUT PVC?



CABLE SAW

HANDY TOOL FOR
CUTTING PVC
PIPE IN DIFFICULT
TO REACH PLACES



\$18.78

INC. GST
CODE 9670



PIPE CUTTER AUTOCUT

MONUMENT

QUICK & CLEAN
CUT

- Quality UK Designed & Made
- Light Weight
- Spare blades available
- Spare blade suits both Cutters

40mm PVC

\$56.38

INC. GST
CODE 2644

50mm PVC

\$59.02

INC. GST
CODE 2645

PVC PIPE SAW PLUMTOOL



UNIQUE TEETH
DESIGN
WILL NOT
SHATTER PIPE

- 500mm
- Specifically for cutting PVC pipe
- Comes with deburrer
- Will not shatter pipe
- Blade length 420mm

\$70.33

INC. GST
CODE 8011



RECIPROCATING SAW BLADE SAMURAI



CUT IS FREE OF BURRS

- Specifically designed for cutting PVC pipe
- Cuts straight
- Made in Japan
- 210mm

\$19.51

INC. GST
CODE 9632



SAMURAI
RECIPROCATING
SAW BLADE #9632



IDEAL
FOR
CONFINED
SPACES

INTERNAL PIPE CUTTER PLUMTOOL WITH DIAMOND WHEEL

\$46.16

INC. GST
CODE 1347

- Will cut pipe from 40mm up to 150mm
- Fits into a battery drill for easy use
- Diamond wheel will not blunt on concrete or tiles



HACK SAW

BAHCO

THE MOST
COMMON
HACK SAW ON
THE MARKET

- Swedish design and quality
- Very high blade tension for straight and accurate cuts



\$59.44

INC. GST
CODE 9917

LENOX HACK SAW BLADE

- Made in the USA
- 24 TPI x 300mm

\$4.41

INC. GST
CODE 9167



FRAMING STIFFENER PLATE



Are you complying with AS 1684.2 2021?

When holes for waste pipes or vents are drilled through top or bottom timber plate it must be reinforced.

- Framing Stiffener Plate is made from quality **heavy gauge 1.55mm Galvanised Steel**
- The Framing Stiffener Plate can be fitted above the timber plate if required

INSTALLATION NOTES:

When the Stiffener Plate is fitted to the underside of the top plate, a hole of up to 60mm diameter is allowed in the plate.

If the studs are too close together, the Stiffener Plate can be fitted to the top of the top plate.

When fitting the Stiffener Plate to a stud the centre of the hole for pipework must be at least 100mm from any noggin or the top plate.

Use **ALL 12 screws** provided to attach the Stiffener Plate to restore the strength of the studwork.



FRAMING STIFFENER PLATE

Kit includes:

1 x Frame Stiffener Plate
12 x Type 17 35mm x 12G Z/Yellow Screws



HUGE SAVINGS!



DUAL APPROVED BALL VALVES

F X F 15MM

- Dual Approved water & gas
- 1/2 inch BSP
- Stainless steel handle & nut

code: 8200

NOW
\$6.60

F X F 20MM

- Dual Approved water & gas
- 3/4 inch BSP
- Stainless steel handle & nut

code: 8201

NOW
\$8.80

F X F 25MM

- Dual Approved water & gas
- 1 inch BSP
- Stainless steel handle & nut

code: 8202

NOW
\$17.60

F X F 32MM

- Dual Approved water & gas
- 1 1/4 inch BSP
- Stainless steel handle & nut

code: 8210

NOW
\$27.50

F X F 40MM

- Dual Approved water & gas
- 1 1/2 inch BSP
- Stainless steel handle & nut

code: 8211

NOW
\$38.50

F X F 50MM

- Dual Approved water & gas
- 2 inch BSP
- Stainless steel handle & nut

code: 8212

NOW
\$61.60

Valid until August 31st 2024. All prices inc. GST

Same day delivery for Sydney and Melbourne Metro

CHECK OUT OUR NEW CLEARANCE PAGE

CRACKING DEALS

WHILE STOCKS LAST!

ITEMS ADDED REGULARLY



RED BACK HEXTYTE

\$12.50

SAVE \$14.69

CODE: 5631

55M



QUICK STICK HANGING BRACKET

\$4.73

SAVE \$3.15

CODE: 2828

450mm



DRAINLAG 10M ROLL

\$7.00

SAVE \$7.48

CODE: 8720



COVER PLATE RAISED 40mm WHITE PLASTIC

\$110 QTY 200

SAVE \$78.32

CODE: 2033

100mm



WATTS WATER HOSE F X F PEX LINED 1000mm

\$5.50

SAVE \$6.05

CODE: 2943



COVER PLATE RAISED 50mm WHITE PLASTIC

\$110 QTY 200

SAVE \$78.32

CODE: 2034

100mm

AND MANY, MANY MORE....

WWW.PLUMBERSCHOICE.COM.AU/CLEARANCE

CLEARANCE SALE CLEARANCE SALE CLEARANCE SALE CLEARANCE SALE

SPILL SAFE



**STOP
THE
SLOP**



1

Tip entire contents into pan



2

Allow to set

3 Remove pan

- Turn the pan water to GEL
- No more water spills to clean up

\$7.55
INC. GST
Code: 2509

RED BACK



DRAIN DYE

**NON
TOXIC
TO THE
ENVIRONMENT**

- 40g tub contains:
20g green & 20g red
- Designed to trace waterflows
in sewer & storm water drains



1kg Red
\$232.76
INC. GST
Code: 9902

1kg Green
\$232.76
INC. GST
Code: 2511

40g tub
\$25.70
INC. GST
Code: 1947

RED BACK

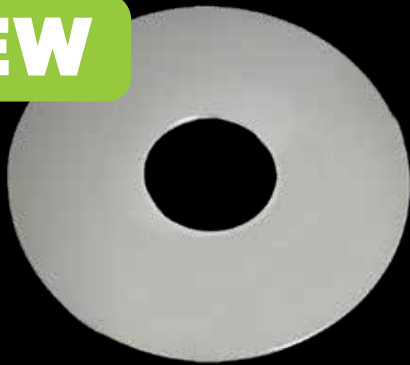


Pick your flavour!

1/2 inch BSP cover plates to suit every appetite

1/2"
FAVES

NEW



1/2" FLAT CHROME

- Chrome plated to suit mini stops
- 22mm hole
- 67mm OD

Pack Qty 1 Code: 4209

67mm



**Flat
1/2" BSP**

Pack Qty 50 Code 9154

67mm



**10mm Rise
1/2" BSP**

Pack Qty 50 Code 9153

72mm



**16mm Rise
1/2" BSP**

Pack Qty 10 Code 1652

72mm



**22mm Rise
1/2" BSP**

Pack Qty 10 Code 1653

65mm



**34mm Rise
1/2" BSP**

Pack Qty 1 Code 1649

70mm



**STAINLESS
STEEL**

**Flat Square
1/2" BSP**

Pack Qty 10 Code 4011

70mm



**CHROME
PLATED
ABS PLASTIC**

**10mm Rise Square
1/2" BSP**

Pack Qty 2 Code 4010



**White Metal
1/2" BSP
10mm Rise**

Pack Qty 1 Code 4013



**White Plastic
1/2" BSP**

Pack Qty 50 Code 1775



**Black Flat
1/2" BSP**

Pack Qty 1 Code 4018



**Black 10mm Rise
1/2" BSP**

Pack Qty 1 Code 4015



**Rough Brass
1/2" BSP**

Pack Qty 10 Code 4001



**White Plastic
1/2" BSP
Flat Adhesive**

Pack Qty 10 Code 4909



**Black Square Flat
1/2" BSP**

Pack Qty 1 Code 4025



**Black Square Rise
1/2" BSP 10mm**

Pack Qty 1 Code 4026



**Rough Brass
1/2" BSP
for Corrugated**

Pack Qty 1 Code 4005

BULK SPECIAL

COVER PLATES

COMPLETE
COVER PLATES

Per 10
\$99

CODE 1792



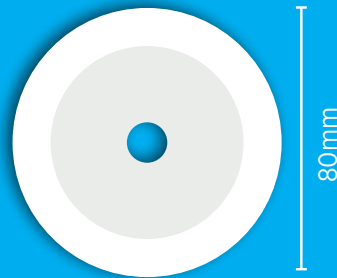
DISHWASHER COVER PLATE

- Leave a neat finish in the cupboard
- Fits over the solenoid valve
- Keeps pests out

FLEXYFLANGES
CUPBOARD PLATES

Multi-fit Cupboard Plate Fits Multiple Sizes!

- Flexible centre
- Fits tight to pipe
- Ant-proof



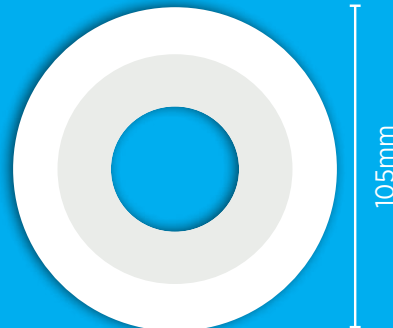
80mm

Per 80
\$132

CODE 8250



STRETCHES OVER 9 - 22mm PIPE



105mm

Per 50
\$99

CODE 9968



STRETCHES OVER 40 - 60mm PIPE

Suits 40mm DWV to 50mm socket

Valid until 31st August 2024

BRISTOL

Holds
up to
150kg

Roof Safety Step

Easy 3 Step Install • Provides increased safety

2406



Safer
permanent
access to
rooftop

Permanent

Safety Brackets & Step

- 2 x Powder Coated Stainless Steel Brackets
- 1 x 450mm Step Powder Coated Aluminium Square Tube
- 2 x Type 17 65mm x 12G screws
- 2 x Hex Head Self-Drilling 16mm screws

2405



Reusable

Safety Bracket Pair

- 2 x Powder Coated Stainless Steel Brackets
 - 2 x Type 17 65mm x 12G screws to secure the brackets
 - 2 x Type 17 35mm x 12G screws to secure a timber step
- Suggested Timber size of 90 x 35mm (not included)



Bostik

smart adhesives



TRUSTED BRAND

ROOF & GUTTER SILICONE



- Bostik Quality
- Ideal for sealing sheet metal, roofing & guttering
- Potable water approved AS4020-1999
- Neutral Cure
- Non-Corrosive

GREY
300ml



Code: 9953

BOX
20

BLACK
300ml



Code: 9812

BOX
20

TRANSLUCENT
300ml



Code: 9926

BOX
20



SILICONE - XTREME

- UV resistant, absorbs acoustic and mechanical vibrations
- Highly flexible with up to 400% elongation
- Sticks and seals all common building materials, even in the wet
- Contains zero solvents and is non-bubbling
- +/-25% cyclic expansion and low VOC
- Interior and exterior use

GREY
290ml



Code: 8225

BOX
12

WHITE
290ml



Code: 9845

BOX
12

BLACK
290ml



Code: 8226

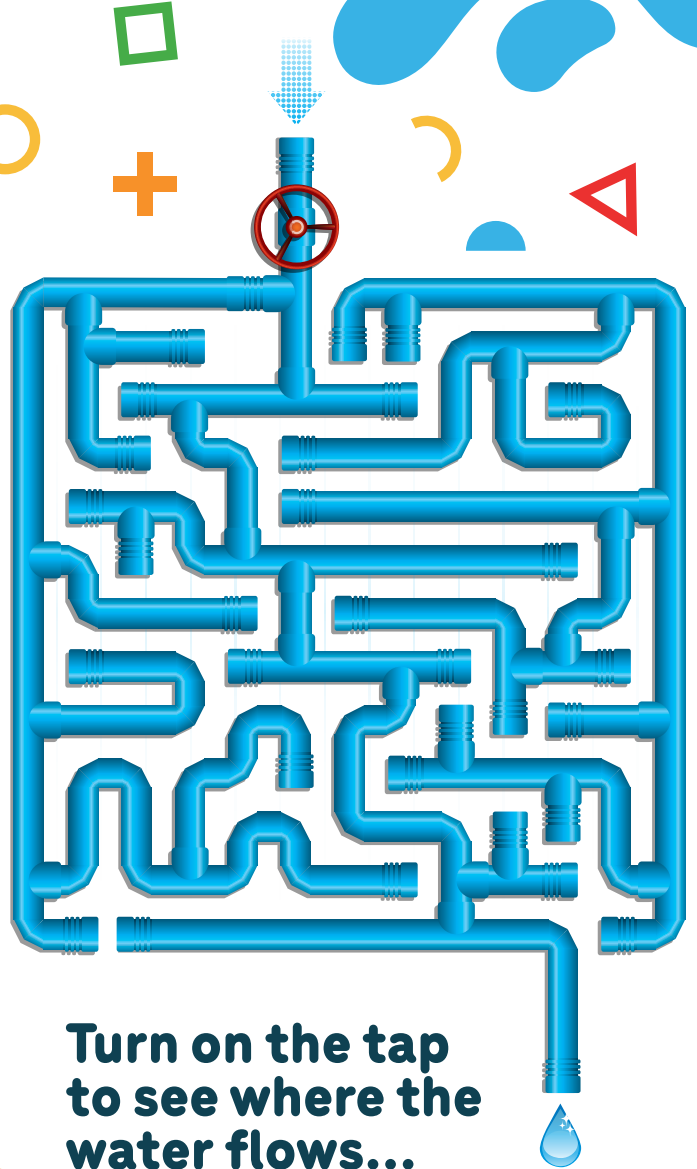
BOX
12

LITTLE PLUMBERS PLAYGROUND

S R E J V S W Z H W M B G G P
 P M G Z M D I S T E D A Y G S
 I K M A F Q X F O W J L C M J
 N I J R P B L V P V H L Y T E
 D O V P E U T Y H L S V J W U
 L F N F V N Z S Q Z P A W Z L
 E R W V T S M Y I O S L R C J
 X M I X E R A V J L B V Z A M
 U L D E L I K L A S I E F K B
 O X O X B L M Y C W J C K N K
 C H K H O V Q K K Q A B O B R
 M D G M D M A I O X H J L N J
 M Y Q G D D Z O L M U Q I K E
 B R I S T O L H X B A W U S F
 I B G J Q T O E X T E N D O B



silicone, extendo,
 bristol, spindle,
 ball valve, mixer,
 jacko



Turn on the tap
 to see where the
 water flows...

tip of the month

To get involved
 send us an email
info@plumberschoice.com.au

Every
 featured
 story
 receives

\$200
 Store Credit



Make use of an old
 shifter by placing
 some pins into the
 jaws and creating
 an adjustable
 grinder spanner.

Courtesy of
 Wayne - Melrose Plumbing
 and Roofing

Thanks mate, we'll be sending you \$200 store credit

WATER TESTING

Plumtest Thermometer Digital

- Measures temperatures from -50 ° to 200 ° C.
- It is perfect for checking the out flow temperature of hot water units, thermostatic mixers and tempering valves.
- Includes battery

Code 1324

\$43.67
INC. GST



Flow Rate Cup Tester

- Scale measures flow rates of 0 to 17 litres per minute
- Measure water flow rates to determine if suitable flow is available prior to plumbing installation

Code 7276

\$38.67
INC. GST



Plumtest Water Pressure Tester on Hose 2500 Kpa

- Universal brass connector will fit to 1 inch or 3/4 inch BSP thread
- Glycerin filled gauge protects workings
- High pressure hose allows flexibility to make reading gauge easier
- Dual scale reads in both kPa and psi



\$98.24
INC. GST

Code 1119



Plumtest Test Bucket

- For pressure testing that water systems are sealed and free from leaks
- Reliable and accurate test results
- Suitable for residential or commercial use
- 12L Solid Steel Bucket
- Quality 2 valve system

Kit includes:

- 1.5m long hose
- 4 spare washers

Code 9866

\$547.03
INC. GST



**RELIABLE &
ACCURATE
TEST RESULTS**



DRAINAGE PLUGS



Inflatable Test Plugs

- With Schroeder Valve

50mm
w/ 1.5m hose
Code: 9006

\$107.80

100mm
w/ 2.5m hose
Code: 2009

\$132

150mm
w/ 1.5m hose
Code: 9007

\$176.00

Test Plug Right Angled with Handles

100mm



- The only plug to use when testing at a right angled junction
- Keeps hands out of drains
- Cannot be lost down drain
- Cast Aluminium
- Patented



CHS CHRIS HUNTER SALES

Code: 2004

\$153.16

Inflatable Test Plug Pump

Code: 2104

- Suits Inflatable Test Plugs
- Hand pump
- Can't over inflate
- Convenient handy size



Test Plug Aluminium

- A breeze to install
- 2 convenient tie-off points



90mm

Code: 8765

\$64.68

100mm

Code: 2149

\$52.84

all prices include GST

Same day delivery for Sydney and Melbourne Metro

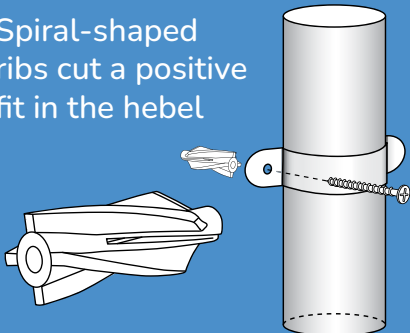


down pipe fixing can be tricky,

but we have the answers

Hebel Anchor

Spiral-shaped ribs cut a positive fit in the hebel



Spiral shaped ribs lock into Hebel

8mm

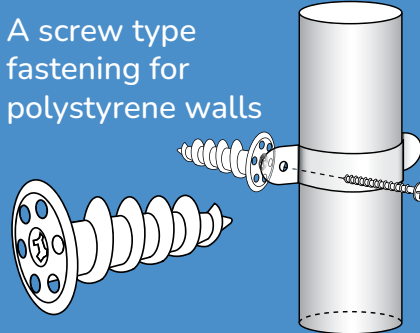
\$71.50
INC. GST

CODE 1295

BAG QTY: 50

Styroscrew

A screw type fastening for polystyrene walls



Great for fixing downpipes to foam walls

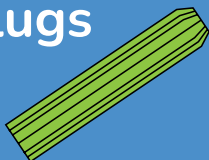
\$70.29
INC. GST

CODE 1223

BAG QTY: 50

Wall Plugs

Tapered end
Green



35mm x 6.5mm

\$12.55
INC. GST

CODE 9934

BOX QTY: 50

35mm x 6.5mm

\$63.62
INC. GST

CODE 9168

BOX QTY: 500

Black Nylon Tap Ins



UV stabilised for outdoor use
Galvanized nail will not rust

5mm x 40mm

\$114.41
INC. GST

CODE 1187

BOX QTY: 500

5mm x 25mm

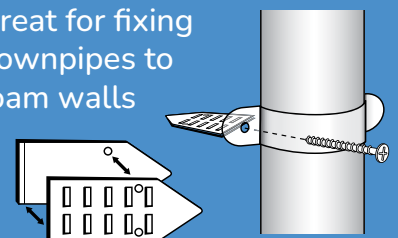
\$81.76
INC. GST

CODE 9524

BOX QTY: 500

Styrowedge

Great for fixing downpipes to foam walls



\$58.42
INC. GST

CODE 1222

BAG QTY: 50



Jacko's Review

NOW
\$128
SAVE \$65.12
CODE: 1916



plum**tool**[™]

SPINDLE ACCESS DRILL

The perennial problem of tiles too close to spindles has been solved!

- Diamond core drill will even cut the hardest of porcelain tiles
- Nylon bush prevents damage to spindle
- Cuts tiles to allow access to tap body

Really handy tool. Got us out of some trouble when we had to fix a handy man's rough in job where he also tiled over existing tiles!

Declan from Declan Smith Plumbing

D

Great tool. Does exactly what it is supposed to do. Cuts tiles, tube spanner goes in to get spindles out. Easy!

Dave from Dave The Plumber

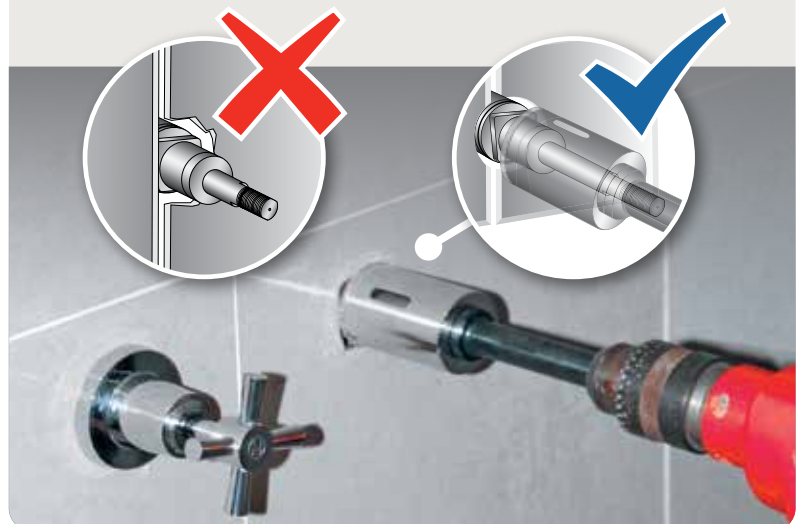
D

Quality tool, use it regularly. Great and easy to use.

John from Icon Plumbing & Gas Fitting

J

Valid until 31st August 2024





plumtool™

HEX BIT HOLDER

with Carabiner

Keep all your Hex Bit Drives handy and in reach

- Quick release
- Suitable for all 1/4 Hex Shank bits
- Aluminium alloy construction
- 5 Clips and carabiner included

\$22.00

CODE: 6101



CLICK IN! CLICK OUT!

QUICK RELEASE

DRILLS FASTER LASTS LONGER

\$40.93

10 PACK

CODE: 9687

plumtool™

DOUBLE ENDED DRILL BITS

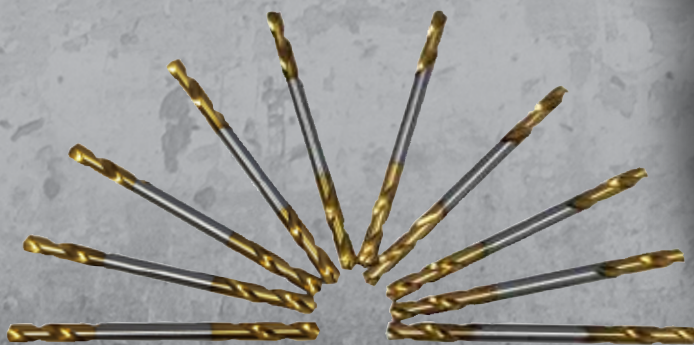
Drill won't ever slip or run off again

- Number 30 Double Ended Panel Drill Bits
- Comes with FREE Click Adaptor
- To Suit 1/8" rivets

FREE BONUS



CLICK ADAPTOR



plumtool™

Innovative tools for PLUMBERS

JOIN PLUMBERS COMMUNITY 30 DAYS RISK FREE



- Access to Water and Gas Standards online
- Regular Industry Updates
- Call for Standards Information
- Standards Feedback
- Access to exclusive Information Sheets
- Advertise your business

1300 054 502
plumberscommunity.com.au

*The benefits will vary depending on the membership level chosen

**PLUMBERS
Community™**



SAVE MONEY BY STAYING UP TO DATE WITH ACCESS TO ONLINE STANDARDS AND JUST A CALL AWAY FROM STANDARDS HELP!

EXTENDO GAS CONNECTOR



1/2" M+F

1/2" F+F

Attach brass tee to each end to create a handle



- ✓ Extendable from 650 - 1200mm
- ✓ 12mm internal bore for better gas flow
- ✓ Flame resistant stainless steel

M + F
\$35.26
INC. GST
CODE 6175

Box of 10
\$246.78
INC. GST
CODE 6176

F + F
\$35.26
INC. GST
CODE 6177

Box of 10
\$246.78
INC. GST
CODE 6178

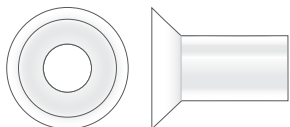


WC installs or repairs?



Pan Cone Black With Skirt

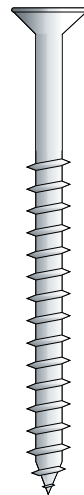
40mm **Code: 9971**
50mm **Code: 9972**



Pan Savers

- protect pans from damage and cracking

Code: 1983



Pan Screws S/S 12G

- Non-corrosive, will not go green
- 25mm make great dummy screws
- The biggest range
- Per 100

25mm	12G	Code: 9622
50mm	12G	Code: 9186
65mm	12G	Code: 2505
75mm	12G	Code: 1400



Wax Pan Seal

- Repair leaky toilets without removing the pan
- Forms a watertight, gastight, and odour-proof seal
- moulded to shape and ready to use
- Remains flexible, adjusts to expansion, contraction and settling

Code: 1882



Fluidmaster®

CODE 2095

Side Entry Cistern Inlet Valve

1/2" Plastic
Thread



- Quick release system for easy maintenance
- Compact design • Anti-syphon • Quiet fill

CODE 2096

Side Entry Cistern Inlet Valve

3/8" Brass
Thread



CODE: 1997

Universal Dual Flush Cable Valve

- Genuine Fluidmaster product
- Beware of imitations
- Top, front or side fitted flush buttons



CODE: 2094

Universal Rear Entry Inlet Install Kit

- Quick release system for easy maintenance
- 300mm Pex Core flexible connector
- Overflow tube bracket
- Compact design
- Fast & quiet fill



CODE: 2131

Universal Dual Flush Outlet Valve

- Fixes leaking toilets and saves water
- Full and half flush
- Easy adjustment
- Includes standard 38mm dual flush buttons
- Other button sizes available





KIT CONTAINS

- 7 x 9603 Cistern Washer Doulton Top Hat Old Style Ballcock
- 4 x Cistern Washer Brent New Style
- 3 x Cistern Washers Replacement Fluidmaster (242)
- 5 x Cistern Washer Gebrit Seating Silicone
- 7 x Cistern Washer Doulton Top Hat New Style Ballcock
- 25 x Float Valve Washers 1/2 Inch
- 5 x Cistern Washer Doulton Concave Suction
- 7 x Cistern Washer 'K' Seating
- 15 x Cistern Washer Caroma Seating Red Silicone
- 7 x Cistern Washer Doulton Seating
- 18 x Cistern Washer Caroma New Style Ballcock #2

Cistern Washer Kit 100 Piece

- Contains 11 types of the most common washers
- Never run out of cistern washers again

Code: 6687



Toggle Springs For Cistern S/S

- Stainless steel bolt & washer
- Will not rust
- 3/16 Inch x 75mm
- Zinc plated toggle
- Designed to give maximum holding power in cavity walls

Code: 3157



Toilet Seat Fixing TST6

- Top/Blind fixing toilet seat anchor kit
- Easy to fit
- Includes stainless steel bolts and washers

Code: 6169



Most Powerful Flush System

- Low Level Flush Pipe
- 4.5/3L Dual Flush Technology
- Simple Flush Volume Conversion to 6/3L or 9/4.5L
- UV Resistant - Certified
- Plastic Cistern with Bottom Inlet
- Saves Water
- Cistern - 391mm H x 420mm D x 133mm W

PRO SERIES® CISTERN with Link and Seat

\$114.55

INC GST | **CODE 2089**



CODE: 2099

Pro Series Cistern Inlet Valve

- Ultra quiet
- Fast refill
- Reduces water hammer
- Genuine Fluidmaster product
- Beware of imitations
- 5 Year Warranty



CODE: 2040

Brass Stem Cistern Inlet Valve

- Heavy duty brass thread will not cross thread
- Ultra quiet
- Fast refill
- Reduces water hammer
- Genuine Fluidmaster product
- Beware of imitations

\$30K IN PRIZES TO BE WON

AVG Quickie® Kits are designed to save Australian Plumbers time and hassle, so we're giving away these great prizes for 4 lucky winners to enjoy that extra time even more!



\$4,000
GIFT CARD

**TACKLE
WORLD**

1-30 JUN 2024

\$6,000
GIFT CARD

**BARBEQUES
GALORE**

1-31 JUL 2024

\$8,000
GIFT CARD

JB HI-FI

1-31 AUG 2024

\$12,000
GIFT CARD

**FLIGHT
CENTRE**

1-30 SEP 2024

PEEL

WIN
\$30K PRIZE POOL!



Peel to Reveal
Your Unique
Code & Scan
QR to Enter

Ends 30.09.24

HOW TO ENTER:

1. Purchase eligible Quickie® Kits (shown right)
2. Look for this sticker and peel to reveal unique code
3. Scan QR code or visit avgquickiecomp.com.au



Winners will be announced on AVG's Facebook page, scan QR code on left to follow us

THE ORIGINAL QUICKIE® KIT RANGE

Australia's most comprehensive and versatile kits for the easy and quick installation of hot water systems!



QUICKIE KIT (WA) QIK15

Code: 8311

With Bottom Inlet Tee



QUICKIE KIT QIK15R

Code: 8307

With Raised Inlet 4-Way Cross



QUICKIE KIT QIK15RCV

Code: 8309

With Raised Inlet Control Valve



QUICKIE KIT QIK15RCVHP

Code: 8310

With Raised Inlet Control Valve and (HP) Solar Tempering Valve



QUICKIE KIT QIK15RHP

Code: 8308

With Raised Inlet 4-Way Cross and (HP) Solar Tempering Valve



HEAT PUMP KIT 15MM

Code: 8312

For Split Heat Pump Systems

4. Enter your Unique Code, Plumbers License Number & Details via the online entry portal to submit your entry during your chosen promotional period (limited to one entry per unique code)

Peace of Mind & Saving Time
for Aussie Plumbers


Australian Valve Group
A WATTS Brand

SPECIAL

DUO AND PRESSURE LIMITING VALVES



\$15
EACH
INC GST

DUO VALVE CxC 15mm

- Use with copper olives
- Complete with nuts
- Conforms AS4032.2 LIC No. 20137

CODE 6850



\$15
EACH
INC GST

DUO VALVE FxF 15mm

- Suitable for hot water systems
- Conforms AS4032.2 LIC No. 20137

CODE 6852

\$15
EACH
INC GST



DUO VALVE INVERTED FLARE 15mm

- Complete with nuts
- Conforms AS4032.2 LIC No. 20137

CODE 6851

\$33
EACH
INC GST



FEMALE 15mm
CODE 3611

COMPRESSION
15mm
CODE 3610



TRI-SET VALVES

- One valve with three pressure settings 350kPa, 500kPa & 600kPa

Valid until 31st August 2024

EXCLUSIVE TO PLUMBERS CHOICE

PRESS SLIP TEES



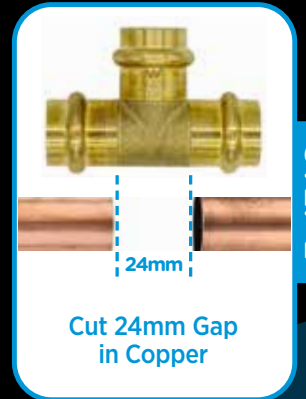
- 25 year warranty*
- Permanent V-Profile press join
- Leak detection o-ring
- Complies with Australian Standards AS3688



STEP 1



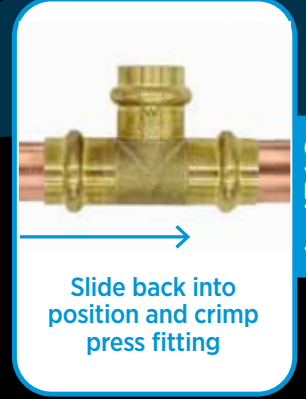
STEP 2



STEP 3



STEP 4



PRESS WATER SLIP TEE

15mm

\$11.97

INC. GST

CODE 8692

PRESS WATER SLIP TEE

20mm

\$13.41

INC. GST

CODE 8690

PRESS WATER SLIP TEE

20x20x15mm

\$16.84

INC. GST

CODE 8694

PRESS GAS SLIP TEE

20mm

\$17.85

INC. GST

CODE 8693

LOOSE NUT PRESS FITTINGS

- 25 year warranty*
- Comply with Australian standards AS3688
- Permanent V-Profile press join profile
- Flame free



PRESS WATER UNION LOOSE NUT COMPRESSION

15mm x 15mm

\$10.46

INC. GST

CODE 8696



PRESS WATER UNION LOOSE NUT FLAT SEAT

15mm

\$11.89

INC. GST

CODE 8685



PRESS WATER LOOSE NUT ELBOW

15mm x 1/2"

\$10.36

INC. GST

CODE 8687

COPPER & BRASS

PRESS FITTINGS

Flame-free

Permanent V-Profile press join

All fittings comply with Australian Standards AS3688

25 YEAR WARRANTY*

Against defects and manufacturing faults in CuPress fittings.

*when installed in accordance with national, state and local plumbing codes by a licensed plumber. Please contact Brasshards for a copy of our full warranty document.



BRASSHARDS

EST. 1967



PLUMBING SUPPLIES SPECIALIST

all prices include GST

GAS FITTINGS



Press Gas Coupling

Code	Size
8639	15mm
8640	20mm
8641	25mm



Press Gas Slip Repair Coupling

Code	Size
8642	15mm
8643	20mm
8644	25mm



Press Gas Elbow f/f 90°

Code	Size
8645	15mm x 90
8646	20mm x 90
8647	25mm x 90



Press Gas End Cap

Code	Size
8660	15mm
8661	20mm
8662	25mm



Press Gas Elbow Lugged

Code	Size
8663	15mm x 15FI
8664	20mm x 20FI



Press Gas Elbow Lugged

Code	Size
8665	15mm x 15MI

WATER FITTINGS



Press Water Coupling

Code	Size
8601	15mm
8602	20mm
8603	25mm



Press Water Slip Repair Coupling

Code	Size
8604	15mm
8605	20mm
8606	25mm



Press Water Elbow f/f 90°

Code	Size
8607	15mm x 90
8608	20mm x 90
8609	25mm x 90



Press Water Adaptor FI

Code	Size
8636	15mm x 15FI
8637	20mm x 20FI
8638	25mm x 25FI



Press Water Adaptor MI

Code	Size
8633	15mm x 15MI
8680	15mm x 20MI
8691	20mm x 15MI
8634	20mm x 20MI
8635	25mm x 25MI



Press Water Tee Reducing

Code	Size
8620	20 x 20 x 15
8621	25 x 25 x 15
8622	25 x 25 x 20
8683	20 x 15 x 15
8684	20 x 15 x 20

Press Water Union Loose Nut (Flat seat)



Code	Size
8685	15mm x 15mm Press
8679	20mm x 20mm Press

Press Water Union Loose Nut Compression



Code	Size
8696	15mm x 15mm Press
8689	20mm x 20mm Press



Press Gas Elbow f/f 45°

Code	Size
8697	15mm x 45
8648	20mm x 45
8649	25mm x 45



Press Gas Reducing Coupling f/f

Code	Size
8650	20mm x 15mm
8651	25mm x 20mm



Press Gas Reducer m/f

Code	Size
8652	20mm x 15mm
8653	25mm x 20mm



Press Gas Tee

Code	Size
8654	15mm
8655	20mm
8656	25mm



Press Gas Tee Reducing

Code	Size
8657	20 x 20 x 15
8659	25 x 25 x 20

EXCLUSIVE TO PLUMBERS CHOICE

Blockhead Press Gas Elbow Lugged (90mm)

15mm x 15MI
Code: 8698



Press Gas Adaptor MI

Code	Size
8666	15mm x 15MI
8667	20mm x 20MI
8668	25mm x 25MI



Press Gas Adaptor FI

Code	Size
8669	15mm x 15FI
8670	20mm x 20FI
8671	25mm x 25FI



Press Gas Slip Tee

Code	Size
8693	20mm



Press Water Elbow f/f 45°

Code	Size
8610	15mm x 45
8611	20mm x 45
8612	25mm x 45



Press Water Elbow m/f 90°

Code	Size
8681	15mm
8682	20mm



Press Water Reducing Coupling f/f

Code	Size
8613	20mm x 15mm
8614	25mm x 20mm
8542	18mm x 15mm
8543	20mm x 18mm



Press Water Reducer m/f

Code	Size
8615	20mm x 15mm
8616	25mm x 20mm



Press Water End Cap

Code	Size
8623	15mm
8624	20mm
8625	25mm



Press Water Tee

Code	Size
8617	15mm
8618	20mm
8619	25mm



Press Water Slip Tee

Code	Size
8692	15mm
8690	20mm
8694	20 x 20 x 15



Press Water Elbow Lugged

Code	Size
8626	15mm x 15FI
8598	20mm x 15FI
8627	20mm x 20FI

Press Water Elbow Lugged

Code	Size
8628	15mm x 15MI



Press Water Elbow MI

Code	Size
8631	15mm x 15MI
8632	20mm x 20MI



Press Water Elbow UNION

Code	Size
8687	15mm x 1/2"
8688	20mm x 3/4"



Press Water Elbow FI

Code	Size
8629	15mm x 15FI
8630	20mm x 20FI

EXCLUSIVE TO PLUMBERS CHOICE

Blockhead Press Water Elbow Lugged (90mm)

15mm x 15MI
Code: 8699



NEW!

LOOSE NUT

Right Angle

Gas ball valve

MxF 15mm

- Eliminates extra fittings on installation
- Saves installation time
- Uses less space than a traditional install
- AGA approved



JAK

Code: 8098



CHS CHRIS HUNTER SALES

RIGHT ANGLE GAS BALL VALVE

Fewer fittings required on installation

**MxF
15mm**



Code: 8099

JAK

CHS CHRIS HUNTER SALES