

# plumbers choice **TRADE ONLY**

*Celebrating  
5 years*



489 Mountain Highway, Bayswater, VIC 3153  
Email: [info@plumberschoice.com.au](mailto:info@plumberschoice.com.au) • Ph: (03) 9720 8274

[www.plumberschoice.com.au](http://www.plumberschoice.com.au)



## 5 Years ago...

Five years ago, Plumbers Choice opened its doors in Sydney. It was a huge achievement for us as a humble little Melbourne-based supplier. But more so, our expansion was the sign of an industry adopting the Trade Only mentality.

In the past five years, we have gained a huge amount of support from the New South Wales and Queensland plumbing communities. Our same day delivery for Sydney Metro and a quicker, more convenient service to rural New South Wales and Queensland has seen our Smithfield based warehouse grow by 64% over the past five years.

We would like to thank each and every plumber who has supported our Sydney team and embraced a Trade Only industry. We endeavour to expand our range, innovating an industry and provide a better service to each and every plumber Australia wide. So where next? Your state might soon see a same day delivery service just like Melbourne and Sydney.

**LUKE BOLTON**  
DIRECTOR, PLUMBERS CHOICE

**plumbers choice** 

**Shop Trade Only Anywhere Anytime!**

## How to Order

**Come in and see our knowledgeable staff at our Trade Outlets - Monday - Friday**  
489 Mountain Highway, Bayswater, VIC  
4/200 Woodpark Road, Smithfield, NSW

**Or shop Trade Only the way that suits you...**



**Your Personal Sales Rep**



**Order on our NEW App**



**Email your order to:**

[sales@plumberschoice.com.au](mailto:sales@plumberschoice.com.au)



**Call Sales 03 9720 8274**

[www.plumberschoice.com.au](http://www.plumberschoice.com.au)

# PRESS LUGGED ELBOWS

**Quick and reliable to install, while ensuring a secure, leak-proof connection every time!**

All fittings comply with Australian Standards AS3688



**DOWNLOAD OUR NEW MOBILE APP**



Available on the iPhone  
**App Store**



ANDROID APP ON  
**Google play**

**BLOCK HEAD**

Fix & install from any direction!



EXCLUSIVE TO PLUMBERS CHOICE



PATENTED



- Reduce the number of noggins required
- Can press it while in place
- Lead-free brass
- 25 year warranty
- Fix it from any direction
- Permanent V-Profile press join profile
- Flame-free
- Complies with Australian Standards AS3688

**Blockhead Press Water Elbow Lugged (90mm)**

15mm x 15MI  
Code: 8699

**Blockhead Press Gas Elbow Lugged (90mm)**

15mm x 15MI  
Code: 8698



**Press Gas Elbow Lugged 15mm x 15MI (90mm)**

- 25 year warranty\*
- Permanent V-Profile press join profile
- Flame-free

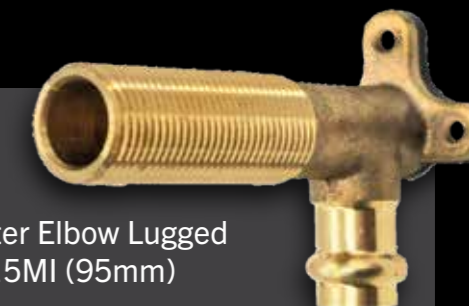
15mm x 15MI  
Code: 8665



**Press Water Elbow Lugged 15mm x 15MI (95mm)**

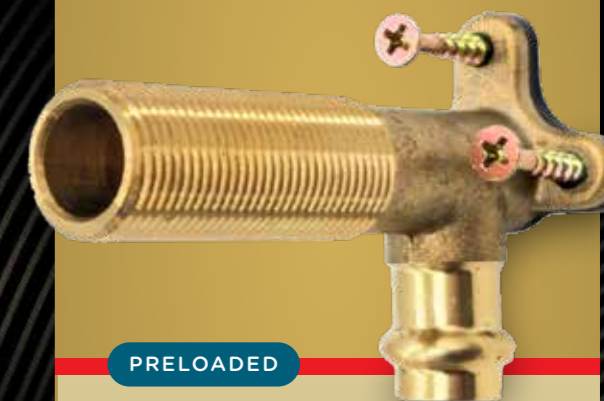
- 25 year warranty\*
- Permanent V-Profile press join profile
- Flame-free

15mm x 15MI  
Code: 8628



**NEW**

**Preloaded with screws**



PRELOADED

**Press Water Elbow Lugged 15mm x 15MI (95mm)**

- Preloaded with 30mm x 8g Phillips head Chipboard Screws
- 25 year warranty\*
- Permanent V-Profile press join profile
- Flame-free
- Complies with Australian Standards AS3688



15mm x 15MI  
Preloaded (95mm)  
Code: 7584



# BULK SPECIAL

## TEFLON BOXES

100 Rolls

**\$110**

CODE 9011

THREAD TAPE  
**PINK**

100 Rolls

**\$137.50**

CODE 9010

THREAD TAPE  
**YELLOW**

200 Rolls

**\$137.50**

CODE 9012

THREAD TAPE  
**WHITE**

**RED BACK**

100 Rolls

**\$165**

CODE 1546

THREAD TAPE  
**GREY**

**RED BACK**



PRICES INC. GST

Valid until 31st Dec 2024

### RED BACK PLUMBERS' TUBE-PASTE

CODE: 1843

150g



**RATED TO 1600 kPa WHEN USED IN CONJUNCTION WITH HEMP, TEFLON OR ON FLARED FITTINGS**

- Does not set hard
- Non-toxic & odourless
- Heat rating from -20C to 95C
- Environmentally friendly/non-flammable
- Approved for use on drinking water, NG, LPG, TG & TLPG

**BACK IN STOCK**



plumtool™

### PVC CAP TOOL

Makes easy work of loosening a cap

- Great for tightening a cap as well
- Light weight, ultra strong

CODE: 1996

**\$70.16**  
INC. GST



CODE: 2103

**\$88.91**  
INC. GST

plumtool

### PIN POINT PEG

Make your mark

Pin point the exact centre of any application!



1 Mark out point and drive locating peg into the ground.



2 Rotate arm 90° out of the way to allow for excavation.



3 Once excavation is completed, rotate arm back to original position to install pipe.



4 Backfill & remove from ground. Job completed.

# DRAINAGE PLUGS



## Inflatable Test Plugs

- With Schroeder Valve



50mm  
w/ 2.5m hose  
Code: 9006

**\$114.27**



100mm  
w/ 2.5m hose  
Code: 2009

**\$139.92**

150mm  
w/ 2.5m hose  
Code: 9007

**\$186.56**

## Test Plug Right Angled with Handles

100mm



CHS CHRIS HUNTER SALES

- The only plug to use when testing at a right angled junction
- Keeps hands out of drains
- Cannot be lost down drain
- Cast Aluminium
- Patented

Code: 2004

**\$162.35**

## Inflatable Test Plug Pump

Code: 2104

- Suits Inflatable Test Plugs
- Hand pump
- Can't over inflate
- Convenient handy size



## Test Plug Aluminium

- A breeze to install
- 2 convenient tie-off points



90mm

Code: 8765

**\$68.56**

100mm

Code: 2149

**\$56.01**

all prices include GST

# BULK SPECIAL

## EZY FIT CONNECTORS PEX LINED

**BURST PROOF  
10 YEAR WARRANTY**



### EZY FIT WATER CONNECTOR

- Burst Proof Inner Core
- 1/2" Female x 1/2" Female Connection
- Premium 8mm Straight Water Hose

Per 25  
**\$88**  
INC. GST



225mm  
Qty 25  
Code: 5100

300mm  
Qty 25  
Code: 5101

450mm  
Qty 25  
Code: 5102

### EZY FIT WATER CONNECTOR M & F EXTENSIONS

- Burst Proof Inner Core
- 1/2" Male x 1/2" Female Connection
- Ideal for extending mixer tails that are too short

150mm  
**\$88**  
INC GST

225mm  
**\$99**  
INC GST



10 PAIRS

150mm  
Qty 20  
Code: 5009

225mm  
Qty 20  
Code: 9155

Valid until 31st December 2024



Are you complying with

AS/NZS 3500.1 C1 9.7.2

**COVER PLATE LABELS**

PER 10

- Suit any 1/2", 5/8" or 3/4" Centre Cover Plate
- Self-Adhesive
- UV Stable
- Can be retrofitted

48mm Diameter



48mm

'Rainwater'  
White on Green  
CODE: 4901



'Recycled Water Do Not Drink'  
White on Lilac  
CODE: 4904



'Rainwater'  
Green on Clear  
CODE: 4902



'Rainwater Do Not Drink'  
Green on Clear  
CODE: 4903

**STAINLESS PRINTED COVER PLATES**

PER 1

- Suit Rainwater
- Stainless Steel
- UV Stable

67mm Diameter



67mm

'Rainwater'  
White on Green  
CODE: 4905



'Rainwater'  
Green on Clear  
CODE: 4907



'Recycled Water Do Not Drink'  
White on Lilac  
CODE: 4906

**WHITE PRINTED COVER PLATES**

PER 10

- UV Stable

73mm Diameter



73mm

'Rainwater'  
Green on White  
CODE: 8562



'Recycled Water Do Not Drink'  
Lilac on White  
CODE: 1579



"For the professional plumber"

**DISHWASHER COVER PLATES**

- Leave a neat finish in the cupboard
- Keeps pests out
- Fits over the solenoid valve

Code: 1792



**MULTI PURPOSE COVER PLATE**

Suitable for Washing Machines & Dishwashers

- Leave a neat finish in the cupboard
- Covers a hole in the cupboard up to 120mm x 115mm
- Keeps pests out
- Fits hot & cold hoses, power cord, Optional outlet hose cap

Code: 1796



# PAN HOLE COVER

CODE: 4115



*We've got you covered!*



**10  
PACK**

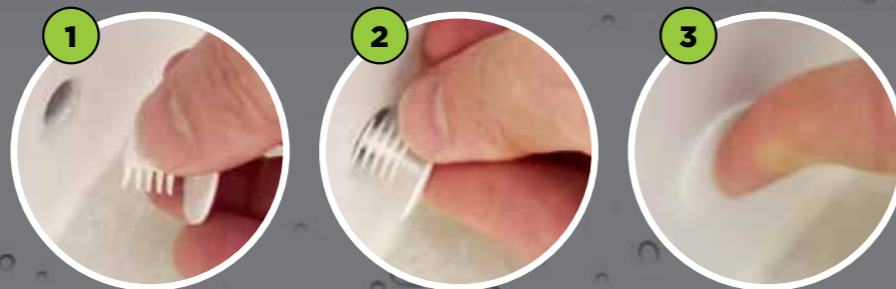


Fits multiple hole sizes

**EASY TO INSTALL**

Our design fits **MULTIPLE** sizes!

Other brands only fit one size



# SHOWER TEST CARTRIDGES

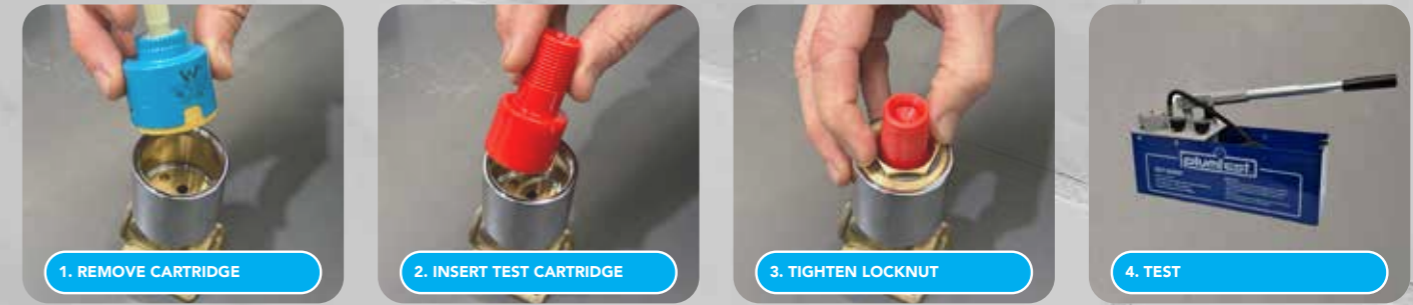


9080 TEST MIXER CARTRIDGE

9081 BLANK MIXER CARTRIDGE

- ▶ Allows connecting pipework to be tested to the full 1500 KPA as per the Australian standard
- ▶ Integrated mixing chamber eliminates the need to loop out of the wall
- ▶ One-piece reusable product to protect the working cartridges during the testing process

- ▶ To temporarily plug an existing in-wall mixer
- ▶ Stops water crossing in the mixer until you return after sourcing a new working cartridge



**BRISTOL**

**Holds up to 150kg**

# Roof Safety Step

**Easy 3 Step Installation • Provides increased safety**

**2406**



Safer permanent access to rooftop

## Permanent Safety Brackets & Step

Leave in place for permanent safe access

- 2 x Powder Coated Stainless Steel Brackets
- 450mm Step, Powder Coated Aluminium Square Tube
- Fastenings included

**2405**



## Reusable Safety Bracket Pair

Provides safe access when installing roof

- 2 x Powder Coated Stainless Steel Brackets
  - Fastenings included
- Suggested Timber size of 90 x 35mm (not included)*

**NEW!**

# LOOSE NUT

## Right Angle Gas ball valve MxF 15mm

- Eliminates extra fittings on installation
- Saves installation time
- Uses less space than a traditional install
- AGA approved



**JAK**

Code: 8098



**CHS** CHRIS HUNTER SALES

# RIGHT ANGLE GAS BALL VALVE

**MxF 15mm**

*Fewer fittings required on installation*

Code: 8099

**JAK**

**CHS** CHRIS HUNTER SALES



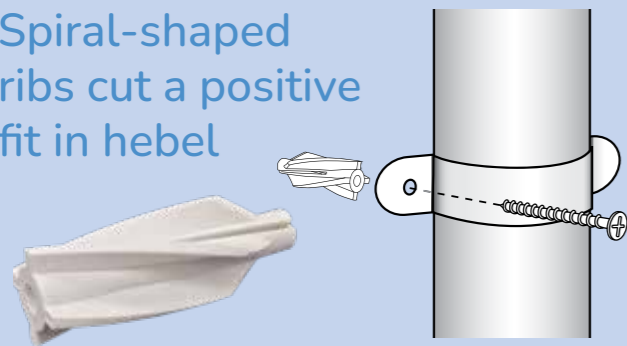


# downpipe fixing can be tricky,

# but we have the answers

## Hebel Anchor

Spiral-shaped ribs cut a positive fit in hebel



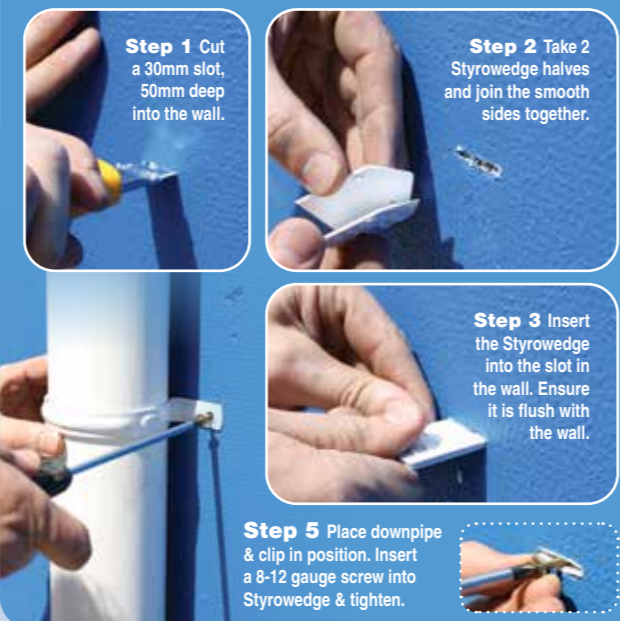
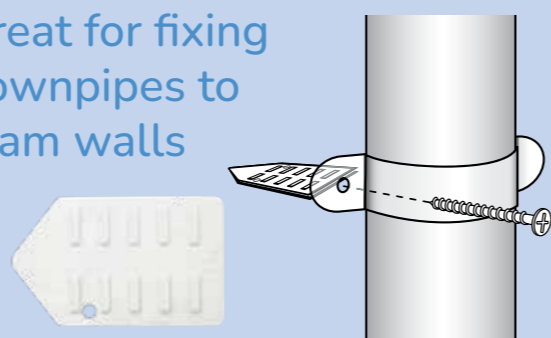
- The spiral-shaped outer ribs cut a positive fit in the soft building material
- Pre-drill with a 8mm drill bit
- Adapted for wood, self-tapping and chipboard screws of 4.0 to 5.0 diameter

8mm  
**\$71.50**  
INC. GST

CODE 1295  
BAG QTY: 50

## Styrowedge

Great for fixing downpipes to foam walls



**Step 1** Cut a 30mm slot, 50mm deep into the wall.

**Step 2** Take 2 Styrowedge halves and join the smooth sides together.

**Step 3** Insert the Styrowedge into the slot in the wall. Ensure it is flush with the wall.

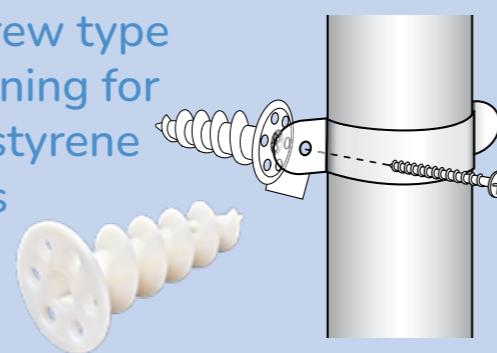
**Step 5** Place downpipe & clip in position. Insert a 8-12 gauge screw into Styrowedge & tighten.

**\$58.42**  
INC. GST

CODE 1222  
BAG QTY: 50

## Styroscrew

A screw type fastening for polystyrene walls



**Step 1** Items required: Styroscrew anchors, suitable 8g screw, Phillips driver bit, cordless drill.

**Step 2** Using a Phillips driver bit, screw the Styroscrew into the polystyrene wall until the flange is flush.

**Step 3** Place the clip or bracket over the Styroscrew anchor and secure with the metal screw you have selected

**\$70.29**  
INC. GST

CODE 1223  
BAG QTY: 50



**\$114.55**  
INC GST | CODE 2089

## PRO SERIES® CISTERN with Link and Seat

**Most Powerful Flush System**

- Low Level Flush Pipe
- 4.5/3L Dual Flush Technology
- Simple Flush Volume Conversion to 6/3L or 9/4.5L
- UV Resistant - Certified
- Plastic Cistern with Bottom Inlet
- Saves Water
- Cistern - 391mm H x 420mm D x 133mm W



CODE: 2099

### Pro Series Cistern Inlet Valve

- Ultra quiet
- Fast refill
- Reduces water hammer
- 5 Year Warranty



CODE: 2040

### Brass Stem Cistern Inlet Valve

- Heavy duty brass thread will not cross thread
- Ultra quiet
- Fast refill
- Reduces water hammer

# NEED TO CUT PVC?

## RECIPROCATING SAW BLADE SAMURAI



### CUT IS FREE OF BURRS

- Specifically designed for cutting PVC pipe
- Cuts straight
- Made in Japan
- 210mm

**\$19.51**

INC. GST  
CODE 9632



SAMURAI RECIPROCATING SAW BLADE #9632

## INTERNAL PIPE CUTTER PLUMTOOL WITH DIAMOND WHEEL

**\$48.93**

INC. GST  
CODE 1347

- Will cut pipe from 40mm up to 150mm
- Fits into a battery drill for easy use
- Diamond wheel will not blunt on concrete or tiles



IDEAL FOR CONFINED SPACES

## PIPE CUTTER AUTOCUT MONUMENT QUICK & CLEAN CUT



- Quality UK Designed & Made
- Light Weight
- Spare blades available
- Spare blade suits both Cutters

40mm PVC

**\$56.38**

INC. GST  
CODE 2644

50mm PVC

**\$59.02**

INC. GST  
CODE 2645



## CABLE SAW

HANDY TOOL FOR CUTTING PVC PIPE IN DIFFICULT TO REACH PLACES



**\$20.66**

INC. GST  
CODE 9670

## PVC PIPE SAW PLUMTOOL



UNIQUE TEETH DESIGN WILL NOT SHATTER PIPE

- 500mm
- Specifically for cutting PVC pipe
- Comes with deburrer
- Will not shatter pipe
- Blade length 420mm

**\$74.56**

INC. GST  
CODE 8011



## PLUMTOOL PROCUT 100mm PVC CUTTER

AUTOMATICALLY CLAMPS TO PREVENT MOVEMENT DURING CUTTING

- Can be used freehand, attached to a vice or clamp
- Rugged design with replaceable heavy duty cutting blades
- To suit 100mm DWV.  
*Inserts available for other sizes*



**\$528**

INC. GST  
CODE 7670

# BULK SPECIAL

## TRAPS

### TRAP COMBO S&P

Includes pre-drilled nipple and dishwasher plug



**62 QTY**  
**40mm**  
CODE 2802

**32 QTY**  
**50mm**  
CODE 2803

### TRAP P



**74 QTY**  
**40mm**  
CODE 2799

**36 QTY**  
**50mm**  
CODE 2798

Includes pre-drilled nipple and dishwasher plug

**32 QTY**

### DOUBLE BOWL CONNECTOR 50mm X 350mm

CODE: 2804

Includes pre-drilled nipple and dishwasher plug

**PURCHASE ANY BOX OF TRAPS AND...**

Valid until 31st Dec 2024

**GET YOUR BONUS**

plumtool™  
**GLUTOTE**

VALUED AT \$56.06

**OR**

**INTERNAL PIPE CUTTER**  
plumtool™

VALUED AT \$48.93

### Trap Black Combo HDPE S&P 50mm

Code: 2847

**new**



# weird & wonderful traps



### Flexidinger Bath Brass/Chrome 40mm x 350mm

- For varying angles and gradients where space below taps & baths is limited
- Flexible tube suitable for solvent welding

Code: 2730



### Flexidinger Cap Lining Elbow

- For varying angles and gradients where space below taps & baths is limited
- Flexible tube suitable for solvent welding

Code: 2733

### Box Trap & Vanity Space Saver 40mm

- Min. exterior dimensions maximises shelf space
- Can be flat against the rear of the cabinet

Code: 2779



### Vanity Space Saver 40mm

- The low profile keeps the space saver tucked up close to the top of the vanity unit

Code: 2778

### Combination Trap Short

40mm Code: 2844 | 50mm Code: 2845

**new**



### Trap Combo S & P with AAV

- Built-in air admittance valve
- Approved for installations up to 60°C
- 20mm overflow connection needs to be drilled out if required

40mm Code: 2785 | 50mm Code: 2786

### Solvent Welded Trap

- Compact glue trap
- S shape (vertical) and traditional gully
- Compact design

40mm Code: 2770 | 50mm Code: 2771

**new**



### Trap Waterless Horizontal 40mm

- Loose Nut
- Ideal for disabled basins
- Screws onto any 40mm plug & waste

Code: 2787

### Trap Waterless 40mm

- Prevents odours escaping
- Tested and approved WMKT20062

Code: 2788

### Trap Micro 40mm

- Loose Nut
- Ideal for disabled basins
- Screws onto any 40mm plug & waste
- Easily adapted to suit 32mm

Code: 2792

### Trap Waterless 50mm

- Prevents odours escaping
- Tested and approved WMKT20062

Code: 2789

# PEX CLIPS



## PEX SADDLES NYLON ANCHOR MASONRY NAIL

BAG QTY  
**100**

• Strong Concrete nail included

16mm Code: 7898	20mm Code: 7899	25mm Code: 7897
<b>\$32.92</b>	<b>\$34.08</b>	<b>\$47.21</b>



**DUALPEX**

## SADDLES NYLON ANCHOR MASONRY NAIL

• Clips onto the pipe and stays in position until fastening is driven in

16 - 20mm | Code: 7896

**\$37.16** BAG QTY **100**



KEEPS  
PIPEWORK  
OFF THE  
SUBSTRATE

# SADDLE FOR POLY PIPE MASONRY NAIL

- Suits 25mm Blue Line
- Keeps pipework off substrate
- UV Stabilise
- Masonry nail

BAG QTY  
**25**  
25mm  
Code: 9050

**\$34.66**

**UV** UV Stabilised  
WILL NOT  
PERISH

**Decoro coated  
nail WILL NOT  
RUST**



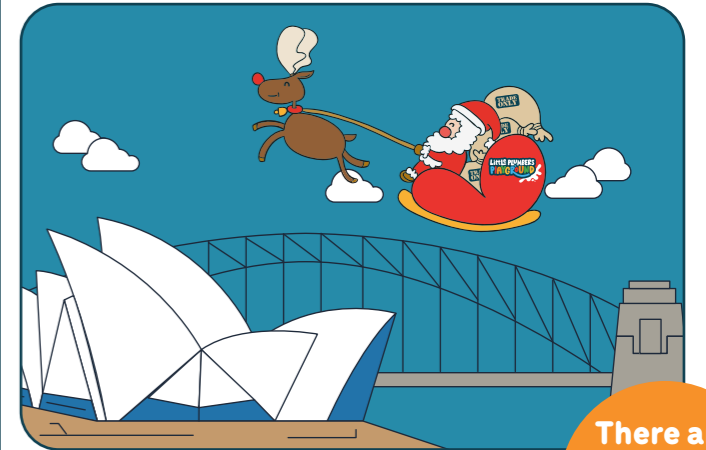
# LITTLE PLUMBERS PLAYGROUND

Can you spot  
the differences?

W P Z O E Y I T G S E H G A M  
K C J B Z K V L O N C O B R L  
O D Y S D I S K W O H R Z R G  
R L F F L N O T I W J F S H Q  
C H R I S T M A S M T N A V B  
N T R N F R V N I A N G N R R  
C P V K N B B A L N D W T U I  
G W P P L J A R A M A R A D V  
R V F R M S W U E G P Y Q O T  
I J W E D S V N J I J P A L J  
N I A S X E D N B S N Q Y P J  
C L S E B C X Y C U E D N H O  
H J M N D E V T J D J M E Y P  
K E T T B N C J P S B A E E F  
B F M M Y K V D S G Y R K I R

word  
search

Santa, Reindeer,  
Christmas,  
Snowman, Present,  
Rudolph, Grinch



There are  
**7**  
to find

## tip of the month

To get involved  
send us an email  
info@plumberschoice.com.au

Every  
featured  
story  
receives

**\$200**  
Store Credit



Ever had a toilet that all of a sudden loses its flush power and there is nothing wrong with the outlet and inlet valves?

Remove the outlet valve, put your inspection camera through the base of the bowl to see if there is anything restricting the flow of water.

If your camera has a hook attachment use it to clear the restriction.

Courtesy of  
Scott - Guardian Plumbing  
and Gas Services



Thanks mate, we'll be sending you \$200 store credit

# STEEL STUDWORK?

plumbers choice HAS THE ANSWERS!



**\$635<sup>33</sup>**  
INC. GST  
Code: 1914

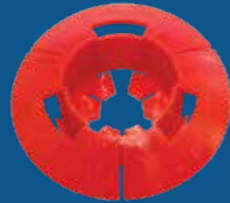
## STUD PUNCH

- For the plumber in a hurry!
- Designed for cutting holes in steel stud work
- Cuts holes super fast



**\$45<sup>30</sup>**  
INC. GST  
Code: 9241

BAG  
100



## MULTI-FIT GROMMET

Works in varying thicknesses of studwork (thickness 0.42mm to 2mm)  
Complies to Australian Standards AS3500.12 Clause 5.5 2.2 Part C



**34MM  
AND  
58MM**

## STEEL STUD DRILL

- Also great in roofing work for overflows, etc
- 34mm to suit yellow grommets
- 58mm for drainage vents



34mm  
**\$74<sup>79</sup>**  
INC. GST  
Code: 2000

58mm  
**\$161<sup>22</sup>**  
INC. GST  
Code: 2001



**16MM  
TO  
20MM**

## STUD CLIP WITH HEX SD SCREW

- Saves time and money by only having to stock one clip
- Use on Steel Studs
- 1/4" Hex Driver Bit included in bag

PATENTED

16mm -20mm  
**\$42<sup>36</sup>**  
INC. GST  
Code: 5569

BAG  
100



## FREE DRIVER BIT



Receive a free 1/4 INCH MAGNETIC NUT SETTER with every Hex Head bag

FREE

BAG QTY  
100

**\$35.49**

PEX SADDLES  
HEX HEAD SD SCREW

16mm | Code: 9075



FREE

BAG QTY  
100

**\$36.43**

PEX SADDLES  
HEX HEAD SD SCREW

20mm | Code: 9076



FREE

BAG QTY  
100

**\$39.88**

DUALPEX  
HEX HEAD SD SCREW

16mm - 20mm | Code: 5577



FREE

BAG QTY  
100

**\$42.70**

DUALPEX W/TAB  
HEX HEAD SD SCREW

16mm to 20mm | Code: 5578



with tab



ONE CLIP  
FITS  
16mm - 20mm  
PEX PIPE



BOX  
500



INCLUDES  
FREE  
DRIVER BIT

25mm x 8g CL2  
Code: 2105 \$51.89

HEX HEAD  
SELF-DRILLING

## PRELOADED

WITH HEX  
SD SCREWS  
Code: 1471



## UNLOADED

Code: 1450



## MINI PRELOADED

WITH BUGLE  
SCREWS  
Code: 1474



## FASTANOG

- Faster than timber noggin
- Compulsory in termite areas
- Set back measurer



preloaded  
set back  
measurer

SLIDE TO  
ADJUST  
LENGTH

# ONE CLIP TO RULE THEM ALL

SUITS BOTH TIMBER & STEEL



TIMBER FRAME



METAL FRAME



HEX HEAD DUO SCREW

**DUALPEX**  
JAY TYPE HEX HEAD DUO SCREW



- Fits 16mm - 20mm Pex pipe
- Avoid install on awkward angles

Bag Qty 100  
Code: 5589

**DUALPEX**  
STUD CLIP HEX HEAD DUO SCREW



- Fits 16mm - 20mm Pex pipe
- Plastic tongue moves outward to fit two size pipes

Bag Qty 100  
Code: 5569

SADDLE FOR PEX HEX HEAD DUO SCREW



- Fits 20mm Pex pipe
- Suits Metal or Timber Frames

Bag Qty 100  
Code: 9076

SADDLE FOR PEX HEX HEAD DUO SCREW



- Fits 16mm Pex pipe
- Suits Metal or Timber Frames

Bag Qty 100  
Code: 9075

**DUALPEX**  
HEX HEAD DUO SCREW

Same clip for timber & steel

- One clip fits 2 sizes - fits 16mm and 20mm Pex pipe
- Plastic tongue on clip moves outward to fit different size pipes

Bag Qty 100  
16 - 20mm  
Code: 5577



Bag Qty 100  
16 - 20mm  
Code: 5578



**FREE**

DRIVER BIT



Every bag comes with a **FREE** 1/4 INCH MAGNETIC NUT SETTER

CHECK OUT OUR NEW CLEARANCE PAGE

# CRACKING DEALS WHILE STOCKS LAST!

ITEMS ADDED REGULARLY



RED BACK HEXYTE

**\$12.50**

SAVE \$14.69

CODE: 5631  
INC. GST

55M



COVER PLATE WHITE PLASTIC RAISED 40mm

**\$110**

SAVE \$71.32

CODE: 2033  
INC. GST



DRAIN LAG BLACK

**\$7.00**

SAVE \$8.48

CODE: 8720  
INC. GST

10M ROLL



COVER PLATE WHITE PLASTIC RAISED 50mm

**\$110**

SAVE \$78.32

CODE: 2034  
INC. GST



HOLE SAW TUNGSTEN

**\$33**

SAVE \$18.23

CODE: 8525  
INC. GST

59MM



PLUMTOOL UNDER PATH DRIVER

**\$297**

SAVE \$35.19

CODE: 1120  
INC. GST

AND MANY, MANY MORE....

[WWW.PLUMBERSCHOICE.COM.AU/CLEARANCE](http://WWW.PLUMBERSCHOICE.COM.AU/CLEARANCE)

CLEARANCE SALE CLEARANCE SALE CLEARANCE SALE CLEARANCE SALE

# WOMBAT

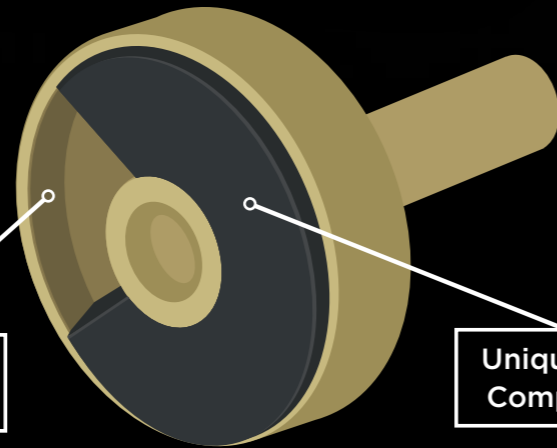
Australian Designed

Brass Shroud prevents spreading and splitting

Tough NP3 compound which is heat resistant and hard wearing

Passes 100,000 cycle test

Complies with AS3718



Protective Brass Shroud

Unique NP3 Compound

**10 Pack**  
Code: 8810

**100 Pack**  
Code: 8811



**PLUMTOOL BREECH STRAIGHTENER**

- For straightening tap breeches prior to fit-off
- Reverse tool to straighten 1/2 B.S.P. lugged elbows
- Patented

**\$66.86**  
INC. GST

Code: 2395



**PLUMTOOL TAP FLANGE REMOVER**

- Use with your hand to increase grip x 3
- Grips any shaped flange
- Use very carefully with round jaw multi-grips to remove stubborn flanges
- Be sure to grab the rubber on the flap area

**\$19.58**  
INC. GST

Code: 8539



**PLUMTOOL LONG NOSE PLIERS**

- 270mm long, twice the reach of standard pliers
- Will remove tap washers from even the deepest breeches
- Thin profile to fit into tap bodies

**\$47.15**  
INC. GST

Code: 1667



**PLUMTOOL SPINDLE ACCESS DRILL**

- Cuts tiles to allow access to tap body
- Diamond core drill will cut even the hardest of porcelain tiles
- Nylon bush prevents damage to the spindle
- Patented

**\$205.05**  
INC. GST

Code: 1916



**PLUMTOOL TUBE SPANNER KIT**

- Will not round out under stress
- Kit Contains: Hex 20mm x 21mm, Hex 22mm x 23mm, Hex 29mm x Square 24mm, Hex 25mm & Hex 28mm, Turning Bar 230mm
- Made in Germany

**\$145.00**  
INC. GST

Code: 2513



**PLUMTOOL TAP HANDLE PULLER**

- Unique shroud stops slipping
- Holes in arms allow for removal of ezy clean handles
- A must for maintenance plumbers

**\$72.78**  
INC. GST

Code: 1758



**PLUMTOOL FRANZ NUT SPINDLE CLEANER**

- For cleaning threads on standard tap spindles
- Much cleaner and easier to use than a wire brush.

**\$47.16**  
INC. GST

Code: 9854



**PLUMTOOL FRANZ BONNET CLEANER T HANDLE**

- For cleaning and straightening the internal thread of tap spindles

**\$38.86**  
INC. GST

Code: 2006



**RED BACK TAP LUBRICANT 45g**

- Approved for potable water
- Working range of between -10°C and 150°C

**\$12.10**  
INC. GST

Code: 8886



**BODY WASHERS RED FIBRE EZ CLEAN**

- For standard taps
- Thin washer for installation of bells
- 23mm ID x 28 OD

Bag of 50  
**\$15.44**  
INC. GST

Code: 9449



**O RINGS NO.8.5**

- For standard tap repairs
- Number 8.5

Bag of 100  
**\$15.15**  
INC. GST

Code: 9164



**TAP RESEATER - FACE & EDGE CUTTER**

- Removes sharp edges on seats so valves will not stick or tear

**\$91.81**  
INC. GST

Code: 2359

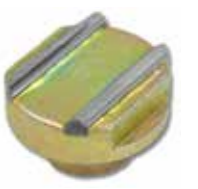


**HYDROSEAL TAP RESEATER**

- Genuine Hydroseal product

**\$60.17**  
INC. GST

Code: 2005



**HYDROSEAL CUTTER 1/2 INCH TUNGSTEN**

- Replacement cutting head for tap reseater

**\$93.13**  
INC. GST

Code: 2499



# CHRISTMAS SPECIALS

**\$170** SHUT OFF TOOL POLY 25mm  
Code: 8004  
**SAVE \$67.29**



**SAVE \$54.79**

**\$185** RAPID BORE BITS KIT  
Code: 9936



**\$200**

**7 PIECE TURN UP TOOL**  
Code: 1754



**SAVE \$80.60**

**\$145**

**SAVE \$46.43**

**WIDE OPENING SHIFTER SET**  
Code: 5012



**SAVE \$48.27**

**\$135**

**GULLY GRABBER**  
Code: 2610



**\$225**

**SAVE \$53.26**

**TUBE SPANNER KIT**  
Code: 2513



**\$275**

**HOLE SAW KIT TUNGSTEN TIP**  
Code: 9430



**SAVE \$81.88**

**\$125**

**DELUXE MIXER TAP SOCKET SET**  
Code: 9885



**SAVE \$49.77**

**\$50**

**SAVE \$18.93**

**TRAP DRILL**  
Code: 2601

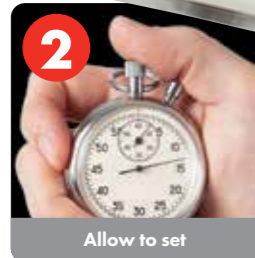




# SPILL SAFE



**STOP THE SLOP**



**3** Remove pan

Tip entire contents into pan

Allow to set

- Turn the pan water to GEL
- No more water spills to clean up

**\$7.55**  
INC. GST  
Code: 2509

**RED BACK**



# DRAIN DYE

**NON TOXIC**  
TO THE ENVIRONMENT

- Designed to trace waterflows in sewer & storm water drains
- 40g tub contains: 20g green and 20g red



1kg Red **\$232.76** INC. GST Code: 9902  
1kg Green **\$232.76** INC. GST Code: 2511  
40g tub **\$25.70** INC. GST Code: 1947

**RED BACK**



**BRASSHARDS**  
EST. 1967



| PLUMBING SUPPLIES SPECIALIST |



## SecuraNut fixing

Locks on and won't loosen

**40% MORE GRIP!**



Metal Bolt Fixing

Polymide Pex Tails

EXCLUSIVE TO PLUMBERS CHOICE



Metal bolt fixing kit featuring **NEW SecuraNut**

### ▲ BASIN MIXER SWIVEL

- Wels 4\* 7.5 LPM
- Rated to 1500kPa
- Metal bolt fixing kit featuring new SecuraNut
- 40mm cartridge
- Supplied with polyamide pex tails
- 25 year warranty on all parts
- 5 year warranty on labour

120mm | CODE: 2835



Metal bolt fixing kit featuring **NEW SecuraNut**

### ▲ SINK MIXER SWIVEL

- Wels 4\* 7.5 LPM
- Rated to 1500kPa
- Metal bolt fixing kit featuring new SecuraNut
- 40mm cartridge
- Supplied with polyamide pex tails
- 25 year warranty on all parts
- 5 year warranty on labour

225mm | CODE: 2830



Metal bolt fixing kit featuring **NEW SecuraNut**

### ▲ BASIN MIXER FIXED

- Wels 4\* 7.5 LPM
- Rated to 1500kPa
- Metal bolt fixing kit featuring new SecuraNut
- 40mm cartridge
- Supplied with polyamide pex tails
- 25 year warranty on all parts
- 5 year warranty on labour

120mm | CODE: 2866

# SPECIAL

## NYLON TAP INS

For outdoor use

Black nylon UV stabilised  
will not perish

Unique Decero coated nail  
will not rust

(passes 1000 hour salt spray test)

**WILL NOT FAIL!**

Valid until 31st December 2024

Qty 500  
**\$60**  
INC GST

SAVE  
**\$21.76**



5mm x 25mm  
Code: 9524

Qty 500  
**\$75**  
INC GST

SAVE  
**\$39.41**



5mm x 40mm  
Code: 1187



UV Stabilised  
WILL NOT  
PERISH



Decero coated  
nail WILL NOT  
RUST



Passes  
1000 hour  
salt spray test

For  
outdoor  
use

## NYLON TAP INS BLACK

5mm x 40mm • Qty 100  
Code 1180 \$28.74



UV Stabilised  
WILL NOT  
PERISH

For  
outdoor  
use



**REMOVABLE  
SCREW**

Phillips Head  
Screw can be  
easily removed



# NEW QUICKIE HEAT PUMP

## AVGs HOT WATER INSTALLATION KIT FOR SPLIT HEAT PUMP SYSTEMS

Everything you need, right out of the box, for efficient and compliant installations every time.

### Universal Fit:

Works with most split system heat pumps.

### Insulated & Ready:

UV-stabilized insulation meets state standards.

### Flexible Design:

Adaptable for various state and council requirements.

### Quick Assembly:

Streamlined setup cuts down on-site time.

### All-in-One Kit:

Everything you need, no extra trips.

### Order Code:

8312 Heat Pump Kit 15mm

### INCLUDES:

15mm High Performance Tempering Valve (x1), 15mm Pressure Reduction/Non-Return Isolating Ball Valve Combo (x1), 15mm 4 Way Inlet Cross (x1), 20mm Male x 15mm Copper Olive Brass Elbow c/w Filter (x3), 20mm Male x 15mm Copper Olive Brass Elbow (x1), 15mm Male x 15mm Copper Olive Union (x1), 15mm Female x 15mm Copper Olive Union (x2), PTR and ECV Insulation (x2), 15mm Brass Plug (x1), 15mm Red Fibre Washers (x6).



**NEW**

Order your **AVG Quickie Kit for Split Heat Pump Systems** for a quicker and faster and easier installation experience.

**AVG**  
Australian Valve Group  
A WATTS Brand

# OUR NEW MOBILE APP



**DOWNLOAD.  
LOGIN.  
START  
ORDERING  
TODAY!**



Available on the iPhone  
**App Store**



ANDROID APP ON  
**Google play**



## Order Templates

**Have specific items you order regularly? Want to set up kits for certain jobs?**

Our order templates make it easy...Simply add all the items to the cart and use the 'Save Order Template' button at checkout to create your template.



## Request a Quote

**Something doesn't look right? Want a Rep to look it over?**

Request a personalised quote directly from the checkout page before placing your order. Simply click a button and our team will swiftly provide you with a tailored quote.



## Manage Your Account

Pay your account, look up a previous order, check the status of an order, get an updated quote. Whatever you need to do its now quick and easy in the palm of your hand.



## Favourites

**Typically buy the same gear? Have things you regularly use?**

You can now mark items as a 'favourite' item, then head to the Favourite Items page to access them all in one convenient location. No more scrolling endlessly to find your regularly purchased supplies.



## Promotions & Specials

**Be the first to know about our Promotions & Specials from the palm of your hand.**

**Check out our new Clearance page to see some cracking deals!**