

plumbers choice

**TRADE
ONLY**

Your
drawing
here 

489 Mountain Highway, Bayswater, VIC 3153
Email: info@plumberschoice.com.au • Ph: (03) 9720 8274

www.plumberschoice.com.au



Next Generation

The Plumbers Choice magazine has been around for over 25 years. 192 Editions and still going strong. Over the years, we've converted a lot of plumbers to supporting Trade Only. We've seen many fathers hand over the tools to their sons, creating another generation of plumbers who want to support the industry that provides for them.

To start preparing the next generation of Trade Only plumbers we're going to encourage them all to show their support for Trade Only and the plumbing industry by creating our next cover. So get the pencils out, grab some crayons or Photoshop up a storm and hand the magazine over to your kids to design our next cover.

*See details for prizes and entry requirements:

CLINTON THOMAS
DIRECTOR, PLUMBERS CHOICE

plumbers choice TRADE ONLY

Shop Trade Only Anywhere Anytime!

How to Order

Come in and see our knowledgeable staff at our Trade Outlets - Monday - Friday
489 Mountain Highway, Bayswater, VIC
4/200 Woodpark Road, Smithfield, NSW

Or shop Trade Only the way that suits you...



Your Personal Sales Rep



Order on our NEW App



Email your order to:
sales@plumberschoice.com.au



Call Sales
03 9720 8274

www.plumberschoice.com.au

BEST COVER DESIGN
WINS

The future Little Plumber who creates the best Trade Only cover design will win a \$250 Toyworld voucher and their nominated Plumber will win a \$250 Plumbers Choice voucher*

plumbers choice TRADE ONLY

\$250

Gift Card

TOYWORLD
where the best toys come from

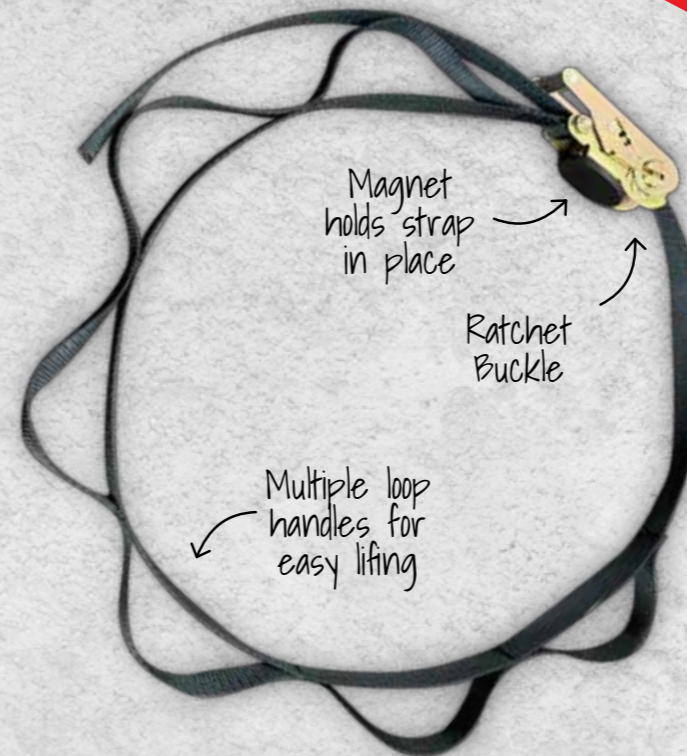
\$250

Gift Card



HOW TO ENTER

*Entries must be mailed to Plumbers Choice, 489 Mountain Hwy, Bayswater 3153 or emailed to marketing@plumberschoice.com.au
Entries close 11:59 pm Sunday 13th April 2025.



CYLINDER LIFTING STRAP

CODE: 5087

- Australian Designed
- Assists in moving a cylinder in tight/difficult spots
- 2.4m Length

plumtool™

Innovative tools for plumbers

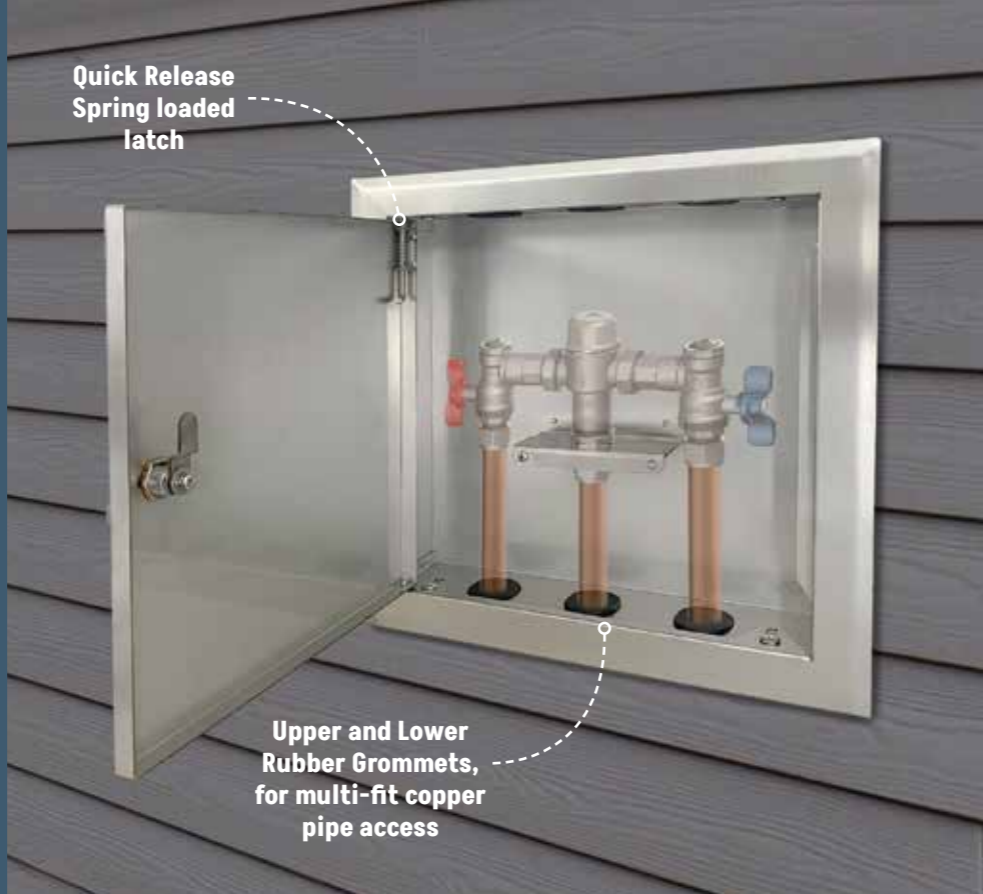
Stainless Steel Box TMV 20/15

Stainless Steel Boxes are lockable and have easily removable stainless steel access doors

305mm Square x 75mm Deep

Other box sizes available on request
*TMV Product not included

Code: 6807



Thermostatic Mixing Valves provide high stability of mixed water temperatures even under changing inlet conditions

High performance Thermostatic Mixing Valves are suitable for a wide range of applications

- Ensures rapid shut down of mixed outlet flow in the event of hot, or cold water supply isolation
- Suitable for installation into AS3500 compliant systems with hot water temperature as low as 60°C
- Adjustment mechanism can be locked to prevent tampering
- Easily serviced on site
- Meets the requirements of AS4032.1

Thermostatic Mixing Valve

15mm

CODE 6805



Thermostatic Mixing Valve

20mm

CODE 6806



FLOW CUP TESTER

Scale measures flow rates of 0 to 17 litres per minute. Measure water flow rates to determine if suitable flow is available prior to plumbing installation.



WATER PRESSURE GAUGE

Designed to test static pressure of water supply to properties. No hoses required, fits directly to the tap. Will test up to 2500kPa.



THERMOMETER WITH PROBE

Accurate thermometer which is ideal for the temperature measurement.



TMV TEST KIT

- Suitable for use on all types and styles of Thermostatic Mixing Valves (TMV)
- Complete testing kit supplied in a handy carry case
- Comes factory set

Kit Contains: Flow cup, Pressure gauge to suit 1/2 inch and 3/4 inch BSP, Thermometer with probe

Code: 9017



BULK SPECIAL

PICK YOUR BONUS!



PURCHASE ANY BOX OF PEX CLIPS & RECEIVE...

GET YOUR **BONUS** PVC PIPE SAW 500mm plumtool™



VALUED AT \$74.56

OR

GET YOUR **BONUS** RAPID BORE BIT 25mm plumtool™



VALUED AT \$42.94

VALID UNTIL 30TH APRIL 2025

ONE CLIP TO RULE THEM ALL

SUITS BOTH TIMBER & STEEL



HEX HEAD DUO SCREW



DUALPEX
JAY TYPE HEX HEAD DUO SCREW



- Fits 16mm - 20mm Pex pipe
- Avoid install on awkward angles

Bag Qty 100
Code: 5589

DUALPEX
STUD CLIP HEX HEAD DUO SCREW



- Fits 16mm - 20mm Pex pipe
- Plastic tongue moves outward to fit two size pipes

Bag Qty 100
Code: 5569

SADDLE FOR PEX HEX HEAD DUO SCREW



- Fits 20mm Pex pipe
- Suits Metal or Timber Frames

Bag Qty 100
Code: 9076

SADDLE FOR PEX HEX HEAD DUO SCREW



- Fits 16mm Pex pipe
- Suits Metal or Timber Frames

Bag Qty 100
Code: 9075

DUALPEX
HEX HEAD DUO SCREW

Same clip for timber & steel

- One clip fits 2 sizes - fits 16mm and 20mm Pex pipe
- Plastic tongue on clip moves outward to fit different size pipes

Bag Qty 100
16 - 20mm
Code: 5577



Bag Qty 100
16 - 20mm
Code: 5578



FREE

DRIVER BIT

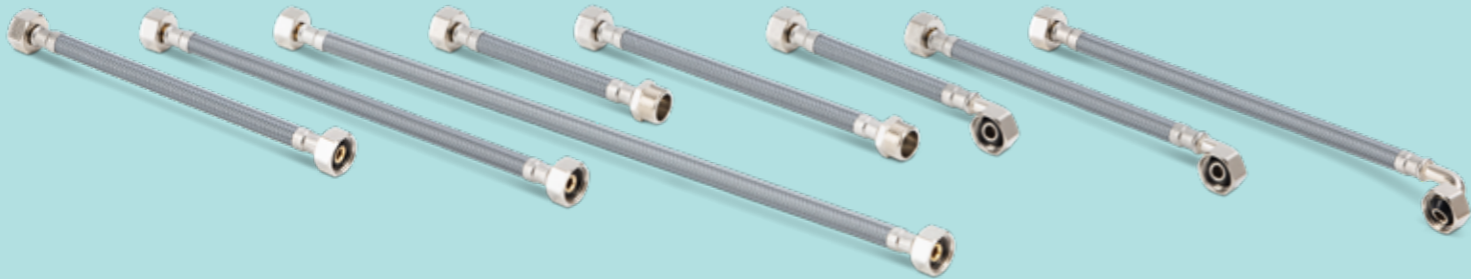


Every bag comes with a **FREE** 1/4 INCH MAGNETIC NUT SETTER

SupaFlex

POLYAMIDE WATER CONNECTORS

LEAD FREE



Polyamide Braided outer hose for improved flexibility and superior resistance to rust and corrosion



LEAK PROTECTION

Durable PEX inner core with 8mm bore to prevent bursts



LEAD FREE

Potable water safe with the inclusion of lead free brass nuts



PRESSURE SAFE

Pressure safe up to: 1500 kPa
Operating temp: 1-80°C

POLYAMIDE WATER CONNECTORS

Length	Connection	Code Per 1	Code Box 25
225mm x 12mm	F&F	2660	2669
300mm x 12mm	F&F	2661	2670
450mm x 12mm	F&F	2662	2671
600mm x 12mm	F&F	2663	2672
225mm x 12mm	Bent Elbow	2666	2675
300mm x 12mm	Bent Elbow	2667	2676
450mm x 12mm	Bent Elbow	2668	2677
		Per Pair	Box 20
150mm x 12mm	M&F	2664	2673
225mm x 12mm	M&F	2665	2674



PVC PRESSURE FITTINGS

NOW STOCKING

High quality PVC pressure fittings for reliable and durable pressure pipeline systems

Other fittings available upon request



PVC PRESSURE ELBOW #13
90° Bend



PVC PRESSURE COUPLING #7
(Socket)
Size 20mm **CODE 5072**
Size 25mm **CODE 5075**



PVC PRESSURE TEE #19

MEASUREMENTS ON LEVEL FOR SET-OUT SPACING



MAGNETS IN TOP FOR USE ON DOWNPIPES



plumtool™

LUGGED ELBOW LEVEL

Perfect for setting out lugged elbows

• Horizontal & vertical vials

\$104.50

CODE: 9896

NEW

plumtool™

Innovative tools for **PLUMBERS**

**Trap Black
Combo HDPE
S&P 50mm**

- High temperature
- Code: 2847**

new



**weird &
wonderful
traps**

new

Combination Trap Short

40mm Code: 2844 | 50mm Code: 2845



**Flexidinger Bath Brass/
Chrome 40mm x 350mm**

- For varying angles and gradients where space below taps & baths is limited
- Flexible tube suitable for solvent welding

Code: 2730



**Trap Combo
S & P with AAV**

- Built-in air admittance valve
- Approved for installations up to 60°C
- 20mm overflow connection needs to be drilled out if required

40mm Code: 2785 | 50mm Code: 2786



Solvent Welded Trap

- Compact glue trap
- S shape (vertical) and traditional gully
- Compact design

40mm Code: 2770 | 50mm Code: 2771



new

Flexidinger Cap Lining Elbow

- For varying angles and gradients where space below taps & baths is limited
- Flexible tube suitable for solvent welding

Code: 2733



**Box Trap & Vanity
Space Saver 40mm**

- Min. exterior dimensions maximises shelf space
- Can be flat against the rear of the cabinet

Code: 2779



**Trap Waterless
Horizontal 40mm**

- Loose Nut
- Ideal for disabled basins
- Screws onto any 40mm plug & waste

Code: 2787



Trap Waterless 40mm

- Prevents odours escaping
- Tested and approved WMKT20062

Code: 2788



Vanity Space Saver 40mm

- The low profile keeps the space saver tucked up close to the top of the vanity unit

Code: 2778



Trap Micro 40mm

- Loose Nut
- Ideal for disabled basins
- Screws onto any 40mm plug & waste
- Easily adapted to suit 32mm

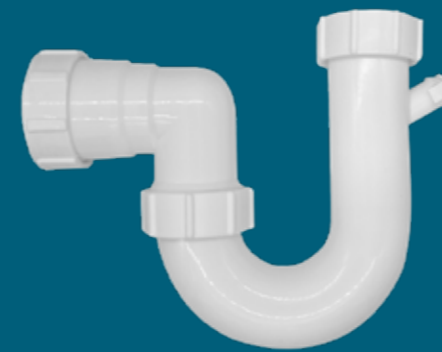
Code: 2792



Trap Waterless 50mm

- Prevents odours escaping
- Tested and approved WMKT20062

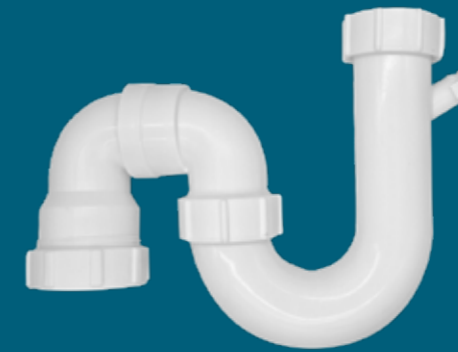
Code: 2789



Trap P

- All PVC complies with ASNZ1260
- Removable plugs in nipples

40mm Code: 2799
50mm Code: 2798



Trap Combo S & P

- All PVC complies with ASNZ1260
- Removable plugs in nipples

40mm Code: 2802
50mm Code: 2803



Trap P Short Leg

- All PVC complies with ASNZ1260

40mm Code: 2796
50mm Code: 2797

**standard
& common
traps**



Trap Extension Solvent Weld

- All PVC complies with ASNZ1260

40mm x 200mm Code: 2782
50mm x 200mm Code: 2783



Trap Adaptor

- All PVC complies with ASNZ1260
- Ideal for reducing a trap to suit a 32mm basin waste

32-40mm Code: 2795



**Trap Extension
Double Nipples (Overflows)**

- All PVC complies with ASNZ1260

50mm x 60mm Code: 2784



Trap Extension

- All PVC complies with ASNZ1260

40mm x 25mm Code: 2780
50mm x 25mm Code: 2781

NEED TO CUT PVC?

RECIPROCATING SAW BLADE SAMURAI



CUT IS FREE OF BURRS

- Specifically designed for cutting PVC pipe
- Cuts straight
- Made in Japan
- 210mm

\$19.51

INC. GST
CODE 9632



SAMURAI RECIPROCATING SAW BLADE #9632

INTERNAL PIPE CUTTER PLUMTOOL WITH DIAMOND WHEEL

\$48.93

INC. GST
CODE 1347

- Will cut pipe from 40mm up to 150mm
- Fits into a battery drill for easy use
- Diamond wheel will not blunt on concrete or tiles



IDEAL FOR CONFINED SPACES

PIPE CUTTER AUTOCUT MONUMENT QUICK & CLEAN CUT



- Quality UK Designed & Made
- Light Weight
- Spare blades available
- Spare blade suits both Cutters

40mm PVC

\$56.38

INC. GST
CODE 2644

50mm PVC

\$59.02

INC. GST
CODE 2645



CABLE SAW

HANDY TOOL FOR CUTTING PVC PIPE IN DIFFICULT TO REACH PLACES



\$20.66

INC. GST
CODE 9670

PVC PIPE SAW PLUMTOOL



UNIQUE TEETH DESIGN WILL NOT SHATTER PIPE

- 500mm
- Specifically for cutting PVC pipe
- Comes with deburrer
- Will not shatter pipe
- Blade length 420mm

\$74.56

INC. GST
CODE 8011



PLUMTOOL PROCUT 100mm PVC CUTTER

AUTOMATICALLY CLAMPS TO PREVENT MOVEMENT DURING CUTTING

- Can be used freehand, attached to a vice or clamp
- Rugged design with replaceable heavy duty cutting blades
- To suit 100mm DWV.
Inserts available for other sizes



\$528

INC. GST
CODE 7670



STEEL STUDWORK?

plumbers choice HAS THE ANSWERS!



\$635³³
INC. GST
Code: 1914

STUD PUNCH

- For the plumber in a hurry!
- Designed for cutting holes in steel stud work
- Cuts holes super fast



\$45³⁰
INC. GST
Code: 9241

BAG
100



MULTI-FIT GROMMET

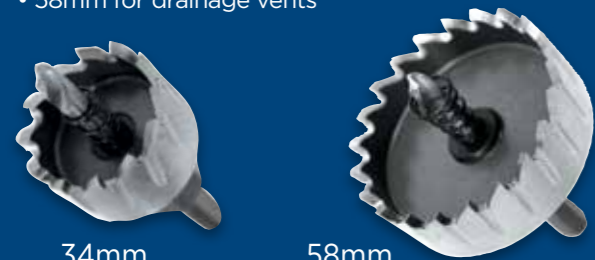
Works in varying thicknesses of studwork (thickness 0.42mm to 2mm)
Complies to Australian Standards AS3500.12 Clause 5.5 2.2 Part C



**34MM
AND
58MM**

STEEL STUD DRILL

- Also great in roofing work for overflows, etc
- 34mm to suit yellow grommets
- 58mm for drainage vents



34mm
\$74⁷⁹
INC. GST
Code: 2000

58mm
\$161²²
INC. GST
Code: 2001



**16MM
TO
20MM**

STUD CLIP WITH HEX SD SCREW

- Saves time and money by only having to stock one clip
- Use on Steel Studs
- 1/4" Hex Driver Bit included in bag

PATENTED

16mm -20mm
\$42³⁶
INC. GST
Code: 5569

BAG
100



FREE DRIVER BIT



Receive a free 1/4 INCH MAGNETIC NUT SETTER with every Hex Head bag

FREE

BAG QTY
100

\$35.49

PEX SADDLES
HEX HEAD SD SCREW

16mm | Code: 9075



FREE

BAG QTY
100

\$36.43

PEX SADDLES
HEX HEAD SD SCREW

20mm | Code: 9076



FREE

BAG QTY
100

\$39.88

DUALPEX
HEX HEAD SD SCREW

16mm - 20mm | Code: 5577



FREE

BAG QTY
100

\$42.70

DUALPEX W/TAB
HEX HEAD SD SCREW

16mm to 20mm | Code: 5578



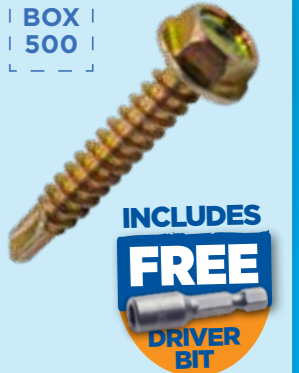
with tab



ONE CLIP
FITS
16mm - 20mm
PEX PIPE



BOX
500



INCLUDES
FREE
DRIVER BIT

25mm x 8g CL2
Code: 2105 \$51.89

HEX HEAD
SELF-DRILLING

PRELOADED

WITH HEX
SD SCREWS
Code: 1471



UNLOADED

Code: 1450



MINI PRELOADED

WITH BUGLE
SCREWS
Code: 1474



FASTANOG

- Faster than timber noggins
- Compulsory in termite areas
- Set back measurer



SLIDE TO
ADJUST
LENGTH

SPECIAL



Includes Low Level Flush Pipe

FLUIDMASTER PRO CISTERN

Most Powerful Flush System

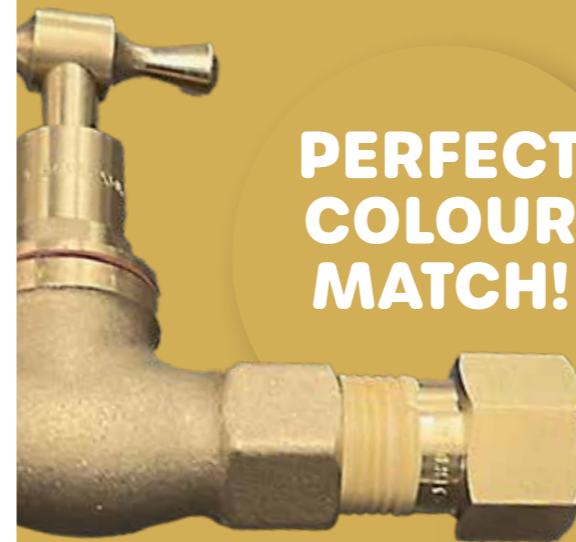
Adjustable up to 9/4.5L PRO Cistern with Link and Seat

- 4.5/3L Dual Flush Technology
- Simple Flush Volume Conversion to 6/3L or 9/4.5L
- UV Resistant - Certified
- Plastic Cistern with Bottom Inlet
- Saves Water
- INSTALL WITH CONFIDENCE**
- code: 2089



Valid until 30th April 2025

NEW



PERFECT COLOUR MATCH!



BRASS COLOURED TEFLON TAPE

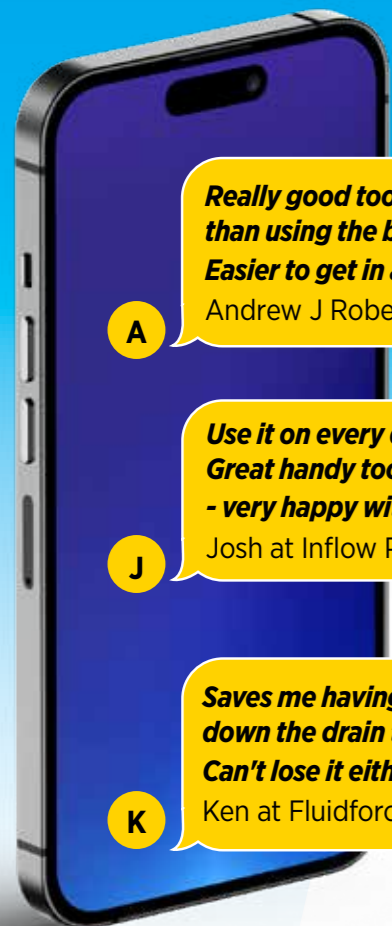
- Approved for water, natural gas and LPG
- Also suitable for diesel fuel, oil, petrol, alcohol, hydraulic fluids and steam
- Can be used on, brass, galvanised steel, PVC, ABS, polypropylene, copper
- Max pressure **gas 690 Kpa**
- Max pressure **water 2000 KPa**
- Temperature range -10°C to 135°C
- 6.6m in length x 12.7mm wide



Thread Seal Tape - Brass: Code 1548



Jacko's Review



A Really good tool. Better than using the blow up bulb. Easier to get in and out.
Andrew J Robertson

J Use it on every drain. Great handy tool that works well - very happy with it.
Josh at Inflow Plumbing Solutions

K Saves me having to put my hand down the drain to tighten. Can't lose it either. Saves time.
Ken at Fluidforce Plumbing

NOW \$110
SAVE \$52.35
CODE: 2004



RIGHT ANGLED TEST PLUG

- The only plug to use when testing at a right-angled junction
- No need to put your hand down the drain
- 100mm
- Cast aluminium
- Patented



CAN NOT BE LOST DOWN A DRAIN

Valid until 30th April 2025

CHECK OUT OUR NEW CLEARANCE PAGE

CRACKING DEALS WHILE STOCKS LAST!

ITEMS ADDED REGULARLY

BOX OF 200
COVER PLATE WHITE PLASTIC
\$110
SAVE \$78.32
CODE: 2033
INC. GST
RAISED 40mm

THERMOCOUPLE 600MM UNIVERSAL
\$10
SAVE \$11.74
CODE: 8005
INC. GST

INSULATING TAPE
\$1.93
SAVE \$8.48
CODE: 9790
INC. GST
20m ROLL

PLUMTOOL CRIMPING TOOL
\$121
SAVE \$47.48
CODE: 2484
INC. GST

PRESS WATER REDUCING COUPLING F/F
\$36.47
SAVE \$21.32
CODE: 7913
INC. GST
50 x 25mm

POLY METRIC TEE
\$20.41
SAVE \$18.15
CODE: 7136
INC. GST

AND MANY, MANY MORE....

WWW.PLUMBERSCHOICE.COM.AU/CLEARANCE

CLEARANCE SALE CLEARANCE SALE CLEARANCE SALE CLEARANCE SALE

SPECIAL

\$18

INC. GST

SAVE \$9.09

TUBE PASTE



For use in conjunction with hemp & teflon tape & on flared fittings

NON TOXIC
AND
ODOURLESS



- Does not set hard
- Heat rating from -20C to 95C
- Environmentally friendly/non-flammable
- Approved for use on drinking water, NG, LPG, TG & TLPG
- Rated to 1600 Kpa when used in conjunction with hemp & teflon or on flared fittings

150g Code: 1843



- NO MORE hard crusty brush**
- NO MORE wastage**
- NO MORE stained clothing**
- NO MORE stinking like thread sealant**

RED BACK



SINK REPAIR KIT



135
PIECES

10 x Sieve Washers Laundry/Dishwasher

10 x Nut & Tail Washer 20mm
5 x Butterfly Hose Clamp Handle Stainless 20mm - 32mm

10 x Kitchen Waste Basket Washer Universal

20 x Trap Rubber Square Washer 40mm

10 x Trap Rubber Square Washer 50mm

10 x Pop Up Wastes Washer 32mm

10 x Pop Up Wastes Washer 40mm

10 x Trap Rubber Single Taper Washer 40mm

10 x Trap Rubber Single Taper Washer 50mm

10 x Trap Rubber Double Taper Washer 40mm

10 x Trap Rubber Double Taper Washer 50mm

\$157.37
INC. GST

CODE 1795

135 PIECE

CISTERN WASHER KIT



100
PIECES

Contains 11 types of the most common washers

\$145.19
INC. GST

CODE 6687

100 PIECE

- 7 x 9603 Cistern Washer Doulton Top Hat Old Style Ballcock
- 7 x Cistern Washer Doulton Top Hat New Style Ballcock
- 7 x Cistern Washer Doulton Seating

- 5 x Cistern Washer Doulton Concave Suction
- 3 x Cistern Washers Replacement Fluidmaster (242)
- 4 x Cistern Washer Brent New Style
- 5 x Cistern Washer Gebrit Seating Silicone

- 7 x Cistern Washer 'K' Seating
- 15 x Cistern Washer Caroma Seating Red Silicone
- 18 x Cistern Washer Caroma New Style Ballcock #2
- 25 x Float Valve Washers 1/2 Inch



ROOF & GUTTER SILICONE



- Bostik Quality
- Ideal for sealing sheet metal, roofing & guttering
- Potable water approved AS4020-1999
- Neutral Cure
- Non-Corrosive

BOX QTY 20

GREY
300ml



Code: 9953

BLACK
300ml



Code: 9812

TRANSLUCENT
300ml



Code: 9926



SILICONE - XTREME

- UV resistant, absorbs acoustic and mechanical vibrations
- Highly flexible with up to 400% elongation
- Sticks and seals all common building materials, even in the wet
- Interior & exterior use

GREY
290ml



Code: 8225

BOX 12

WHITE
290ml



Code: 9845

BOX 12

BLACK
290ml



Code: 8226

BOX 12



SEAL 'N' BOND CRYSTAL

- Phthalate-free, tin-free & solvent free
- High UV resistance
- Multi-functional sealant & adhesive
- Internal & external use

CLEAR 290ml

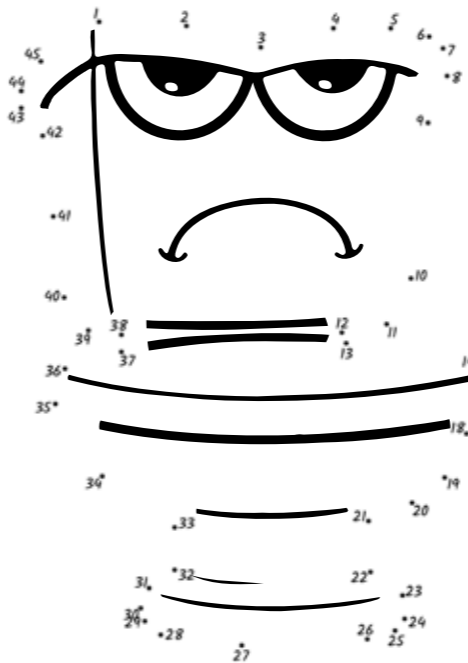


Code: 8224

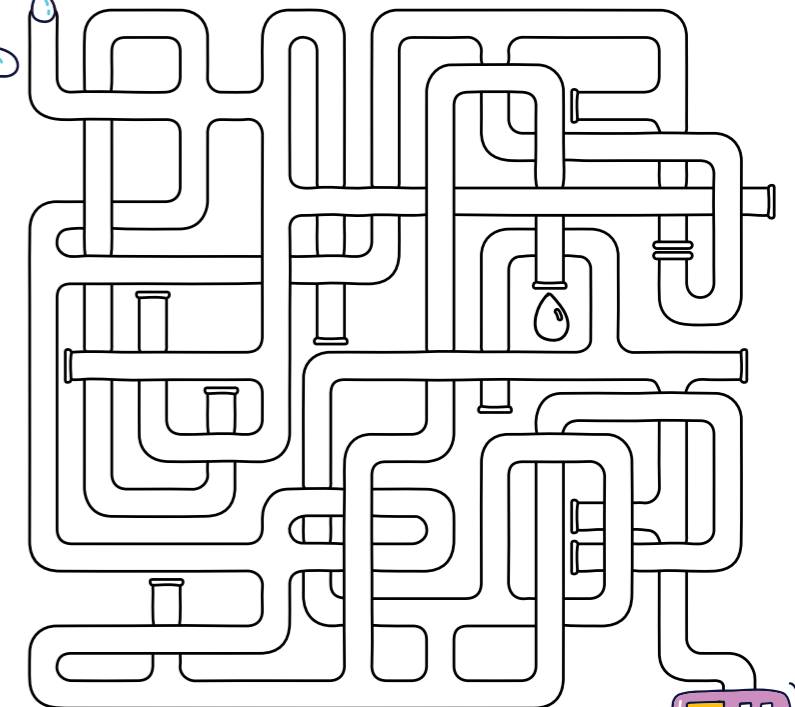
BOX 12

LITTLE PLUMBERS PLAYGROUND

Dot to dot...



How does water get from tap to Washing machine?



Save water by checking faucets and pipes from leaks



tip of the month

To get involved send us an email
info@plumberschoice.com.au

Every featured story receives **\$200** Store Credit



Need to fix your downpipe to the edge of the pole?
Use a stand off bracket and bend the arms to a 90 degree angle.

Courtesy of Adam from Unplugged Plumbing

Thanks mate, we'll be sending you \$200 store credit

COPPER & BRASS LARGE PRESS FITTINGS

32-50mm

ALWAYS IN STOCK



PRESS WATER FITTINGS

CODE	SIZE	CODE	SIZE
Press Water Coupling		Press Water Elbow M/F 90°	
7901	Press Water Coupling 32mm	7927	Press Water Elbow 32mm x 90 M/F
7902	Press Water Coupling 40mm	7928	Press Water Elbow 40mm x 90 M/F
7903	Press Water Coupling 50mm	7929	Press Water Elbow 50mm x 90 M/F
Press Water Slip Repair Coupling		Press Water Elbow F/F 45°	
7904	Press Water Slip Repair Coupling 32mm	7930	Press Water Elbow 32mm x 45 F/F
7905	Press Water Slip Repair Coupling 40mm	7931	Press Water Elbow 40mm x 45 F/F
7906	Press Water Slip Repair Coupling 50mm	7932	Press Water Elbow 50mm x 45 F/F
Press Water Reducing Coupling F/F		Press Water Tee	
7907	Press Water Reducing Coupling 32 x 20mm F/F	7933	Press Water Tee 32mm
7908	Press Water Reducing Coupling 32 x 25mm F/F	7934	Press Water Tee 40mm
7909	Press Water Reducing Coupling 40 x 20mm F/F	7935	Press Water Tee 50mm
7910	Press Water Reducing Coupling 40 x 25mm F/F	Press Water Tee Reducing	
7911	Press Water Reducing Coupling 40 x 32mm F/F	7936	Press Water Tee 32 x 32 x 20
7912	Press Water Reducing Coupling 50 x 20mm F/F	7937	Press Water Tee 32 x 32 x 25
7913	Press Water Reducing Coupling 50 x 25mm F/F	7938	Press Water Tee 40 x 40 x 25
7914	Press Water Reducing Coupling 50 x 32mm F/F	7939	Press Water Tee 40 x 40 x 32
7915	Press Water Reducing Coupling 50 x 40mm F/F	7940	Press Water Tee 50 x 50 x 25
Press Water Reducer M/F		7941	Press Water Tee 50 x 50 x 32
7916	Press Water Reducer 32 x 20mm M/F	7942	Press Water Tee 50 x 50 x 40
7917	Press Water Reducer 32 x 25mm M/F	Press Water End Cap	
7918	Press Water Reducer 40 x 20mm M/F	7943	Press Water End Cap 32mm
7919	Press Water Reducer 40 x 25mm M/F	7944	Press Water End Cap 40mm
7920	Press Water Reducer 40 x 32mm M/F	7945	Press Water End Cap 50mm
7921	Press Water Reducer 50 x 25mm M/F	Press Water Adaptor MI	
7922	Press Water Reducer 50 x 32mm M/F	7946	Press Water Adaptor 32mm x 32MI
7923	Press Water Reducer 50 x 40mm M/F	7947	Press Water Adaptor 40mm x 40MI
Press Water Elbow F/F 90°		7948	Press Water Adaptor 50mm x 50MI
7924	Press Water Elbow 32mm x 90 F/F	Press Water Adaptor FI	
7925	Press Water Elbow 40mm x 90 F/F	7949	Press Water Adaptor 32mm x 32FI
7926	Press Water Elbow 50mm x 90 F/F	7950	Press Water Adaptor 40mm x 40FI
		7951	Press Water Adaptor 50mm x 50FI

PRESS GAS FITTINGS

CODE	SIZE
Press Gas Coupling	
7952	Press Gas Coupling 32mm
7953	Press Gas Coupling 40mm
7954	Press Gas Coupling 50mm
Press Gas Slip Repair Coupling	
7955	Press Gas Slip Repair Coupling 32mm
7956	Press Gas Slip Repair Coupling 40mm
7957	Press Gas Slip Repair Coupling 50mm
Press Gas Reducing Coupling F/F	
7958	Press Gas Reducing Coupling 32 x 20mm F/F
7959	Press Gas Reducing Coupling 32 x 25mm F/F
7960	Press Gas Reducing Coupling 40 x 25mm F/F
7961	Press Gas Reducing Coupling 40 x 32mm F/F
7962	Press Gas Reducing Coupling 50 x 25mm F/F
7963	Press Gas Reducing Coupling 50 x 32mm F/F
7964	Press Gas Reducing Coupling 50 x 40mm F/F
Press Gas Reducer M/F	
7965	Press Gas Reducer 32 x 20mm M/F
7966	Press Gas Reducer 32 x 25mm M/F
7967	Press Gas Reducer 40 x 25mm M/F
7968	Press Gas Reducer 40 x 32mm M/F
7969	Press Gas Reducer 50 x 25mm M/F
7970	Press Gas Reducer 50 x 32mm M/F
7971	Press Gas Reducer 50 x 40mm M/F
Press Gas Elbow F/F 90°	
7972	Press Gas Elbow 32mm x 90 F/F
7973	Press Gas Elbow 40mm x 90 F/F
7974	Press Gas Elbow 50mm x 90 F/F
Press Gas Elbow F/F 45°	
7975	Press Gas Elbow 32mm x 45 F/F
7976	Press Gas Elbow 40mm x 45 F/F
7977	Press Gas Elbow 50mm x 45 F/F
Press Gas Tee	
7978	Press Gas Tee 32mm
7979	Press Gas Tee 40mm
7980	Press Gas Tee 50mm
Press Gas Tee Reducing	
7981	Press Gas Tee 32 x 32 x 20
7982	Press Gas Tee 32 x 32 x 25
7983	Press Gas Tee 40 x 40 x 20
7984	Press Gas Tee 40 x 40 x 25
7985	Press Gas Tee 40 x 40 x 32
7986	Press Gas Tee 50 x 50 x 25
7987	Press Gas Tee 50 x 50 x 32
7988	Press Gas Tee 50 x 50 x 40
Press Gas End Cap	
7989	Press Gas End Cap 32mm
7990	Press Gas End Cap 40mm
7991	Press Gas End Cap 50mm
Press Gas Adaptor MI	
7992	Press Gas Adaptor 32mm x 32MI
7993	Press Gas Adaptor 40mm x 40MI
7994	Press Gas Adaptor 50mm x 50MI
Press Gas Adaptor FI	
7995	Press Gas Adaptor 32mm x 32FI
7996	Press Gas Adaptor 40mm x 40FI
7997	Press Gas Adaptor 50mm x 50FI



HIGH TEMP PRESS FITTINGS

CALL US FOR PRICING

- Peak temperature rating of 200°C
- Permanent V-Profile press join profile
- Flame free
- 25 year warranty*
- Complies with Australian Standards AS3688



High Temperature Press Coupling

15mm 20mm
8030 8031



High Temperature Press 90° Elbow

15mm 20mm
8032 8033



High Temperature Press Tee

15mm 20mm
8034 8035



High Temperature Stop End

15mm 20mm
8036 8037



High Temperature Press Slip Coupling

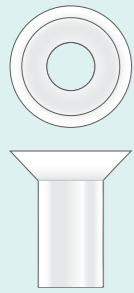
15mm 20mm
8039 8040



High Temperature Press Reducer F&F

20mm x 15mm
8038

BOX
100



Pan Savers

Code: 1983

- Protect pans from damage and cracking

Pan Cone Black with Skirt

40mm
Code: 9971
50mm
Code: 9972

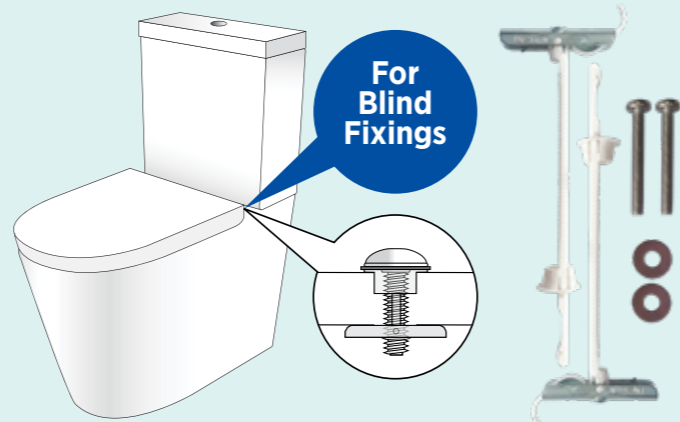


Wax Pan Seal

Code: 1882

- Repair leaky toilets without removing the pan
- Forms a watertight, gastight, and odour-proof seal
- Moulded to shape and ready to use
- Remains flexible, adjusts to expansion, contraction and settling

Pan Installation and Maintenance



Toilet Seat Fixing TST6

Code: 6162

- Top/Blind fixing toilet seat anchor kit
- Includes stainless steel bolts and washers
- Easy to fit

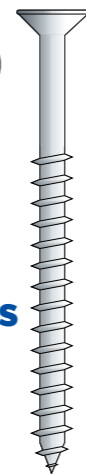
PER
100



Pan Screws S/S 12G

- Non-corrosive
- 25mm make great dummy screw

25mm	Code: 9622
50mm	Code: 9186
65mm	Code: 2505
75mm	Code: 1400



Toggle Springs for Cistern S/S

Code: 3157

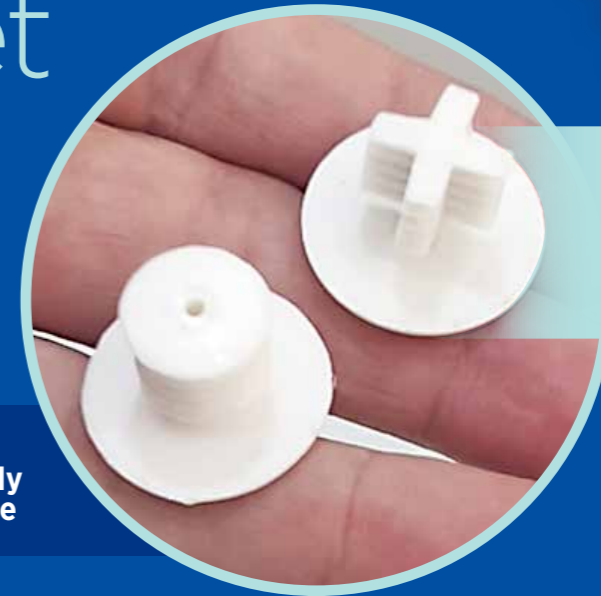
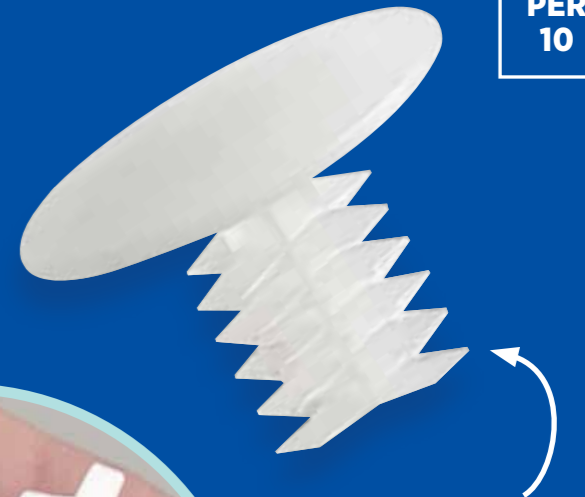
- 3/16 Inch x 75mm Stainless steel bolt & washer
- Zinc plated toggle
- Designed to give maximum holding power in cavity walls

PAN HOLE COVER

Code: 4115

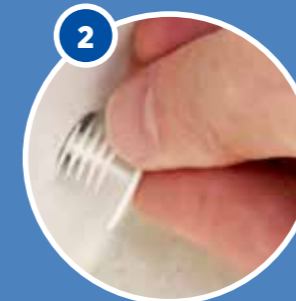
PER
10

Simple way to fill holes in toilet pans



Our unique design fits multiple sizes!

Other brands only fit one size



Easy to install

Fits multiple hole sizes



Patent Pending

plumtool™

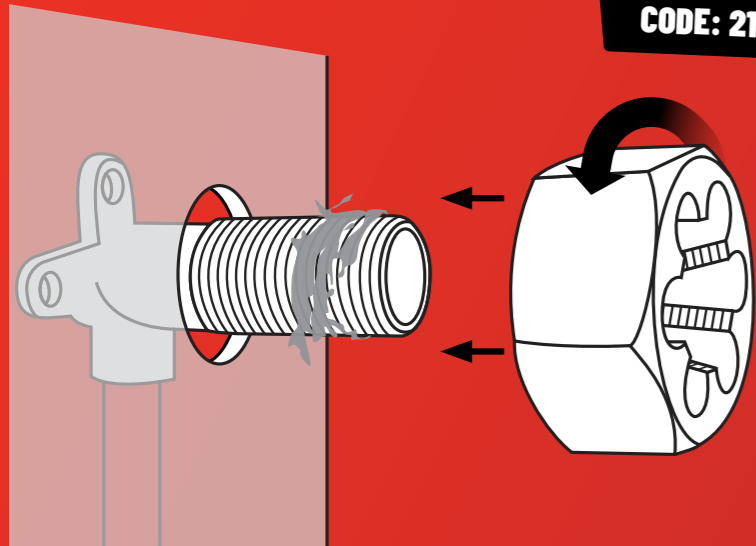
FRANZ TAP & DIE KIT

\$268.54

CODE: 2101

The handy kit for Straightening and cleaning threads

- Fixing crossed threads
- Cleaning out tap bonnet



Kit contains:

- 1/2 inch BSP Franz nut
- 1/2 inch BSP Franz tap
- 3/4 inch BSP Franz nut
- 3/4 inch BSP Franz tap
- Franz Spindle Cleaner
- Franz Nut 10mm Rod
- Franz Bonnet Cleaner T Handle

NEW!

LOOSE NUT

Right Angle Gas ball valve
MxF 15mm

- Eliminates extra fittings on installation
- Saves installation time
- Uses less space than a traditional install
- AGA approved



JAK

Code: 8098



CHS CHRIS HUNTER SALES

EXTENDO GAS CONNECTOR

ONE CONNECTOR DOES IT ALL

1/2" M+F

1/2" F+F



- ✓ Extendable from 650 - 1200mm
- ✓ 12mm internal bore for better gas flow
- ✓ Flame resistant stainless steel

M + F	Box of 10
\$35.26 <small>INC. GST</small>	\$246.79 <small>INC. GST</small>
CODE 6175	CODE 6176

F + F	Box of 10
\$35.26 <small>INC. GST</small>	\$246.79 <small>INC. GST</small>
CODE 6177	CODE 6178

APPROVED TO AS/NZS 5601.1:2022



RIGHT ANGLE GAS BALL VALVE

MxF 15mm

Fewer fittings required on installation

Code: 8099

JAK

CHS CHRIS HUNTER SALES





BAL RATED DRAINAGE VENT & FLASHING KIT

Kit includes:

- Steel vent and cowl
- BAL rated flashing to suit steel roof
- Steel to PVC insulated adaptor

BAL12.5
Black Flashing Kit

Code: **8876**

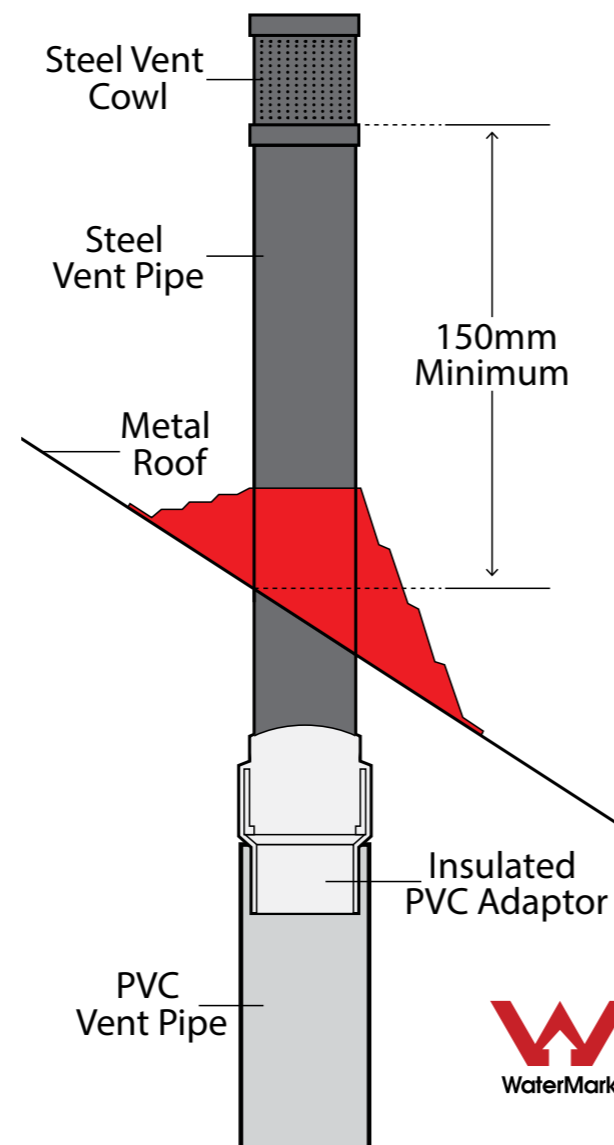


BAL29
Red Silicone Kit

Code: **8877**



PATENTED



**Quick tighten
& release**

**Adjustable jaw
replaces the
need for multiple
spanners**

- Smooth jaws prevent damage to plated finishes
- Quick adjustment button
- Increased grip from parallel jaws

CODE: 2608

250mm

\$126.50
INC. GST



plumtool™

RATCHETING FLAT JAW PLIERS



**Slimline jaws
are great for
tight spots!**

SPECIAL

STOP TAPS

\$5⁹⁰

INC GST



**LOOSE NUT
EXTENSION
15 x 50mm C/P**

CODE: 6582

\$5⁹⁰

INC GST



**STOP TAP
LOOSE
NUT**

CODE: 6587

\$10⁶⁰

INC GST



**STOP TAP LOOSE
NUT WASHING
MACHINE**

CODE: 6590



\$20⁶⁰

INC GST

**STOP TAP LOOSE NUT
TRI VALVE 15mm**

• Ideal for use with water filters & bidets

CODE: 6592



\$17⁷⁰

INC GST

**STOP TAP LOOSE NUT
TRI VALVE**

• Connect tap and dishwasher with single fitting

CODE: 6251



Valid until 30th April 2025

**BACK IN
STOCK**



plumtool™

PVC CAP TOOL

Makes easy work
of loosening a cap

- Great for tightening a cap as well
- Light weight, ultra strong

CODE: 1996

\$70.16
INC. GST



CODE: 2103

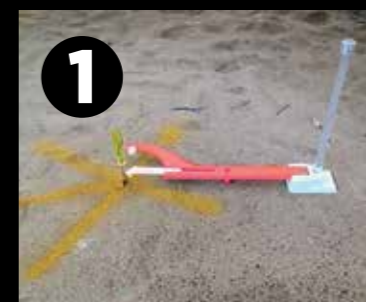
\$88.91
INC. GST

plumtool

PIN POINT PEG

Make your mark

Pin point the exact centre
of any application!



1

Mark out point and drive locating
peg into the ground.



2

Rotate arm 90° out of the way to
allow for excavation.



3

Once excavation is completed,
rotate arm back to original
position to install pipe.



4

Backfill & remove from ground.
Job completed.

plumtool™

Innovative tools for PLUMBERS

RED BACK

Nylon Thread Seal Cord



**New,
easier to
use palm
size**

- Suitable for Cold, Hot & Potable Water
- Approved for Natural Gas, Butane & LPG
- **Class 3** AGA 9184 G
- AS4623 - 2008
- **Temp Range: -10c to 150c**
- **Pressure Rating: 2000kPa**

50m
\$20.72
INC. GST
Code: 5632

150m
\$39.74
INC. GST
Code: 5633

